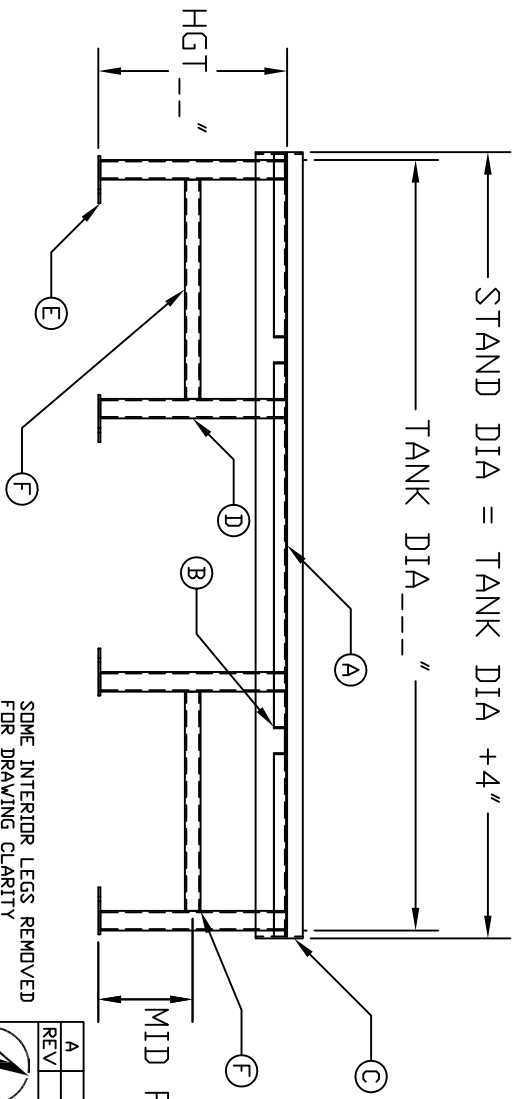
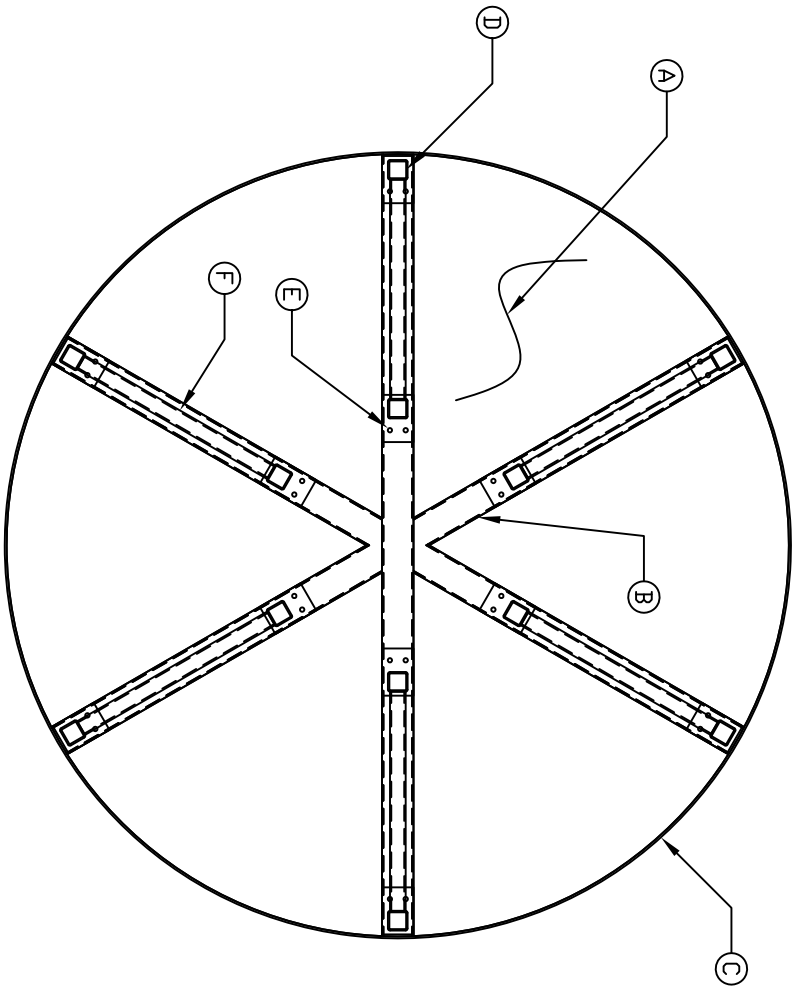


PURCHASER APPROVAL	DATE	INSTALLATION SITE APPROVAL	COATING MATERIAL (CHECK ONE BOX)	STAND DIAMETER	STAND HEIGHT	SPECIFIC GRAVITY	TANK MODEL	SPECIFICATIONS
			<input type="checkbox"/> EPOXY PAINT <input type="checkbox"/> GALV <input type="checkbox"/> OTHER					

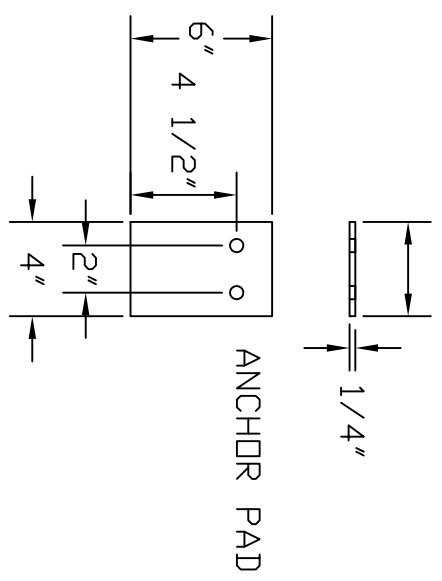


SOME INTERIOR LEGS REMOVED FOR DRAWING CLARITY

MK	QTY	SIZE	DESCRIPTION
A	1	-	12 GAUGE SHEET STEEL PLATFORM
B	6	-	4" WIDE 'C' CHANNEL WITH 1 1/2" FLANGE X 3/8" THICK
C	1	-	6" WIDE X 1/2" THICK ROLLED TOP SUPPORT PLATE
D	12	-	2 1/2" X 2 1/2" X 3/8" THICK BOX TUBING
E	12	-	4" WIDE X 6" LONG X 1/2" THICK PLATE ANCHOR POINTS
F	6	-	2" X 2" X 3/8" THICK BOX TUBING

NOTES:  
 1) SPECIFY HEIGHT WHEN ORDERING  
 2) STAND DIAMETER IS 4" LARGER THAN TANK DIAMETER UNLESS SPECIFIED OTHERWISE WHEN ORDERING

MATERIALS:  
 1) STAND COMPONENTS ARE CARBON STEEL EITHER EPOXY COATED OR HOT DIP GALVANIZED.  
 2) STAND MATERIALS CHANGE BASED ON TANK SIZE:  
 -TANKS UP TO 1000 GALLON MATERIALS ARE 2" X 2" BOX TUBE LEGS WITH 3" WIDE 'C' CHANNEL  
 -TANKS 1001 GAL TO 4200 GALLONS MATERIALS ARE 2 1/2" X 2 1/2" BOX TUBE LEGS WITH 4" WIDE 'C' CHANNEL  
 -TANKS LARGER THAN 4200 GALLONS ARE DESIGNED PER APPLICATION BASIS.  
 -TANKS BELOW 48" DIA THE INTERNAL LEGS WILL BE ELIMINATED.  
 -TANK STANDS THAT ARE 12" HEIGHT OR BELOW WILL NOT HAVE THE CROSSBRACE BETWEEN THE INNER AND OUTER LEGS.



REV A	ADDED ADDITIONAL NOTES	SALES ORDER	1/10/13 SR
REV	REVISION DESCRIPTION	REV DATE	

Loman CORPORATION OF AMERICA  
 300 N TAYLOR ROAD  
 GARRETT, IN 46738  
 PHONE: (660) 357-3181  
 FAX: (660) 357-3798  
 SRD/VLJ/SN  
 12/6/12  
 DVG NUMBER: FTBTS001  
 REV: A

TITLE: FLAT BOTTOM TANK STAND GENERAL ARRANGEMENT DRAWING