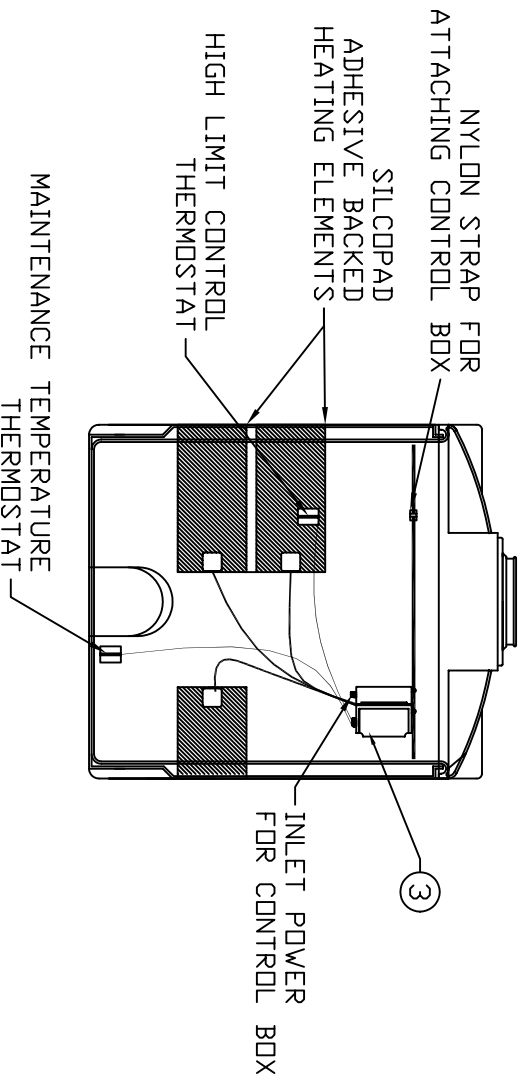
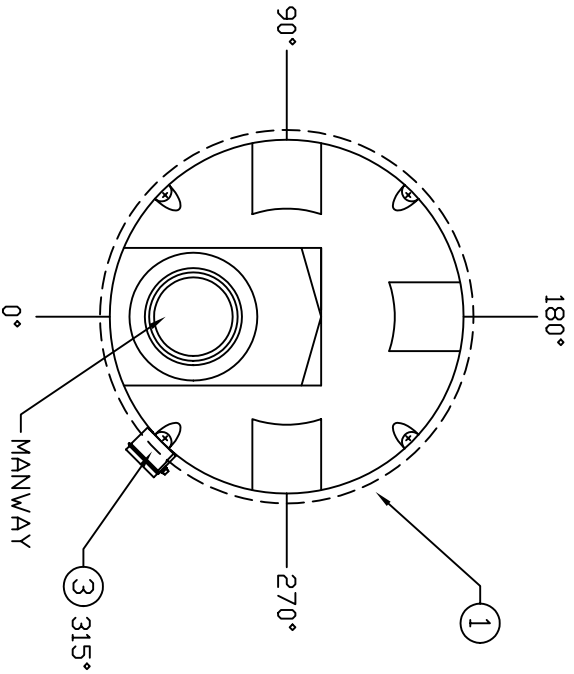


- NOTES:
- 1) INSULATION USED:  
NOMINAL 2" OF URETHANE SPRAY FOAM INSULATION
  - 2) MASTIC USED:  
TWO COATS OF MASTIC COATING (GREY STANDARD)
  - 3) NEMA 4 CONTROL BOX:  
NEMA 4 BOX WITH DUAL CONTROL THERMOSTATS  
HIGH LIMIT / MAINTENANCE TEMPERATURE



ACA MODEL #	CONTROLLER	VOLTS	50° DELTA °T°		80° DELTA °T°		100° DELTA °T°	
			AMPS	WATTS	AMPS	WATTS	AMPS	WATTS
IMT 405	2SPCP	120	1.75	210	3.5	420	3.5	420
IMT 550	2SPCP	120	1.75	210	3.5	420	3.5	420
IMT 1050	2SPCP	120	3.5	420	3.5	420	3.5	420
IMT 1550	2SPCP	120	3.5	420	5.25	630	5.25	630
IMT 2050	2SPCP	120	3.5	420	7	840	7	840
IMT 2550	2SPCP	120	3.5	420	7	840	7	840
IMT 3050	2SPCP	120	5.25	630	7	840	7	840
IMT 4050	2SPCP	120	5.25	630	7	840	10.5	1260
IMT 5250	2SPCP	120	5.25	630	10.5	1260	10.5	1260
IMT 6550	2SPCP	120	7	840	10.5	1260	14	1680

TANK BELOW 405 CONSULT FACTORY

REV A	ADDED IMT 2050, AND IMT 405	4/14/09 SR
REV	REVISION DESCRIPTION	REV DATE
<p style="text-align: center;"><b>Assmann</b> CORPORATION OF AMERICA 300 N TAYLOR ROAD GARRETT, IN 46738</p> <p>PHONE (260) 357-3181 FAX (260) 357-3738</p> <p>SRD/WILSON DRAWN DATE: 11/16/04 DWG NUMBER: HTV002</p>		
<p>TITLE ASSMANN DOUBLEWALL TANK HEAT TRACING &amp; INSULATION PKG</p> <p>ASSMANN CORPORATION</p>		
REV		REV DATE