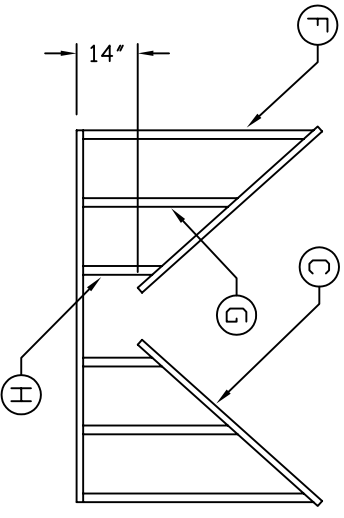
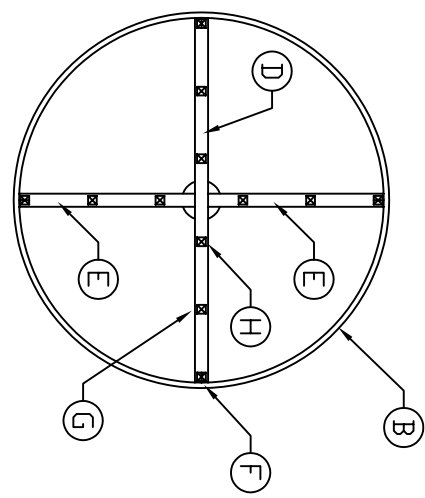
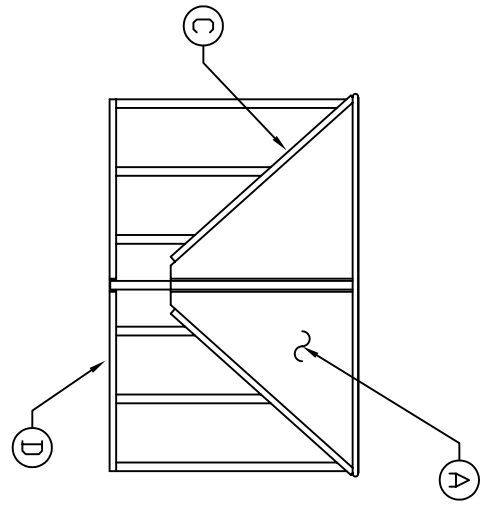
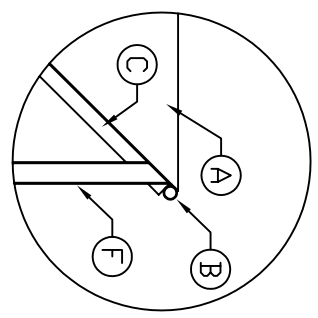


ACCESSORIES

MK	QTY	SIZE	DESCRIPTION
A	1	-	FULL PAN, FORMED 12 GA. SHEET STEEL ROLLED TO A 45° ANGLE WITH 86" DIA. TOP AND 9" DIA. BOTTOM OPENING
B	1	-	SUPPORT RING: 1 1/4" SCH 80 BLACK PIPE ROLLED TO AN 88° I.D.
C	4	-	TOP SUPPORT: 3' X 4.1' C' CHANNEL 55 3/8" LONG
D	1	-	BOTTOM FOOT PADS: 3' X 4.1' C' CHANNEL 83 1/2" LONG
E	2	-	BOTTOM FOOT PADS: 3' X 4.1' C' CHANNEL 40 1/4" LONG
F	4	-	OUTER LEGS: 2' X 2' X 3/16" BOX TUBE CUT TO A 45° ANGLE 56 1/2" LONG SIDE
G	4	-	MIDDLE LEGS: 2' X 2' X 3/16" BOX TUBE CUT TO A 45° ANGLE 39" LONG SIDE
H	4	-	INSIDE LEGS: 2' X 2' X 3/16" BOX TUBE CUT TO A 45° ANGLE 21 1/2" LONG SIDE



NOTES:

1. DIMENSIONAL TOLERANCES ARE PLUS OR MINUS 1/2".

REV	A	UPDATED TITLE BLOCK	12/17/08 MG
REV		REVISION DESCRIPTION	REV DATE
		SALES ORDER	
300 N TAYLOR ROAD GARRETT, IN 46738 PHONE: (260) 357-3181 FAX: (260) 357-3738		BRANNI, JR. D. CRAGER 11/28/95	
TITLE: ICB 1575 GAL. CONICAL BOTTOM TANK STAND		DWG NUMBER: ICS 1575 REV: A	