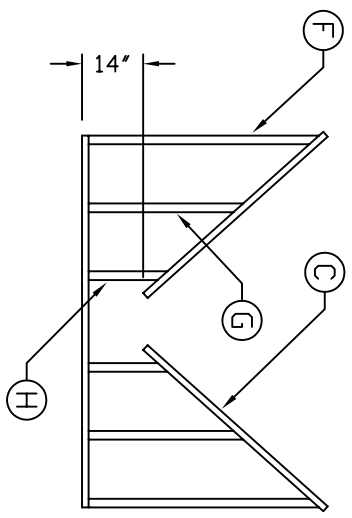
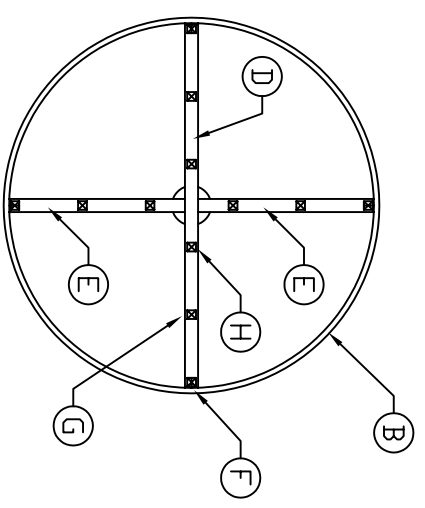
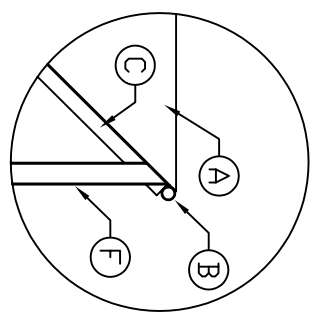
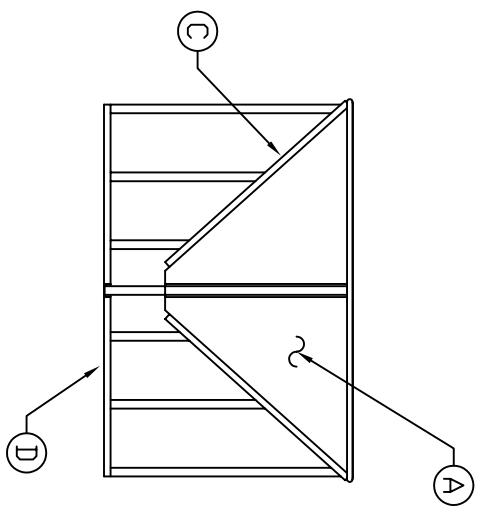


ACCESSORIES

MK	QTY	SIZE	DESCRIPTION
A	1	-	FULL PAN, FORMED FROM 12 GA. SHEET STEEL ROLLED TO A 45° ANGLE WITH 86" DIA. TOP AND 9" BOTTOM OPENING
B	1	-	SUPPORT RING: 1 1/4" SCH 80 BLACK PIPE ROLLED TO AN 88° D.D.
C	4	-	TOP SUPPORT: 3' X 4.1 'C' CHANNEL 55 3/8" LONG
D	1	-	BOTTOM FOOT PAD: 3' X 4.1 'C' CHANNEL 83 1/2" LONG
E	2	-	BOTTOM FOOT PAD: 3' X 4.1 'C' CHANNEL 40 1/4" LONG
F	4	-	OUTER LEGS: 2' X 2' X 3/16" BOX TUBE CUT TO A 45° ANGLE 56 1/2" LONG SIDE
G	4	-	MIDDLE LEGS: 2' X 2' X 3/16" BOX UBE CUT TO A 45° ANGLE 39" LONG SIDE
H	4	-	INSIDE LEGS: 2' X 2' X 3/16" BOX TUBE CUT TO A 45° ANGLE 21 1/2" LONG SIDE



NOTES:  
 1. DIMENSIONAL TOLERANCES ARE PLUS OR MINUS 1/2".

REV	A	UPDATED TITLE BLOCK	12/19/08 MG
REV		REVISION DESCRIPTION	REV DATE
		SALES ORDER	
300 N TAYLOR ROAD GARRETT, IN 46738 PHONE: (260) 357-3181 FAX: (260) 357-3738		BRANN JN D. CRAGER 11/28/95	
TITLE: ICB 2600 GAL. CONICAL BOTTOM STORAGE TANK		DWG NUMBER: ICS 2600 REV: A	