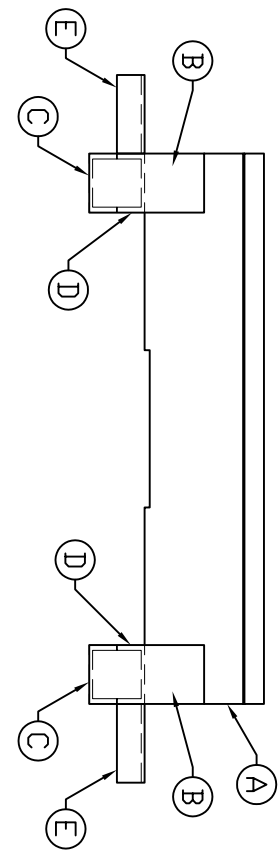
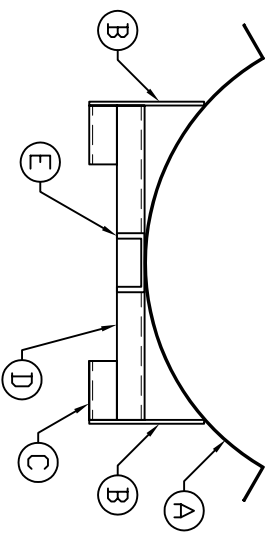


ACCESSORIES

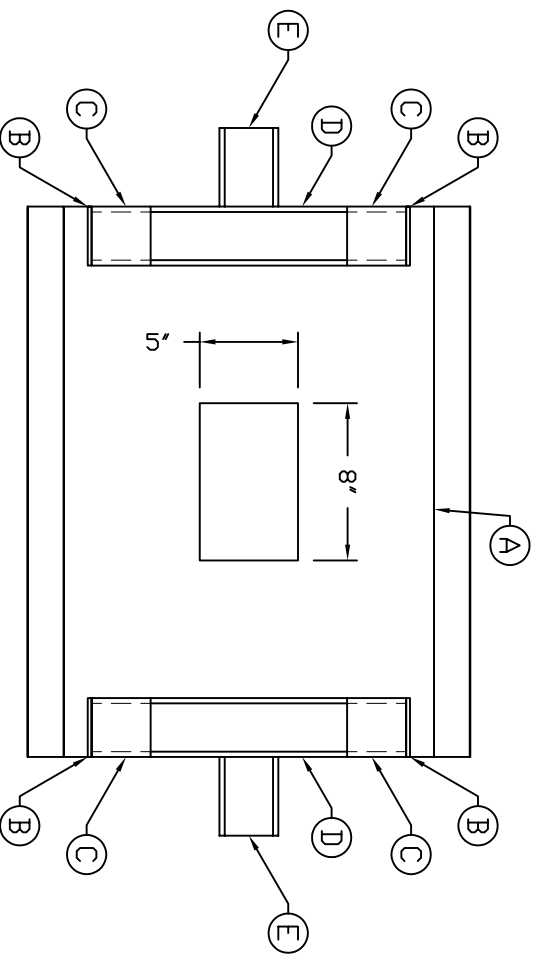
MK	QTY	SIZE	DESCRIPTION
A	1	-	14 GAUGE STEEL ROLLED TO 24" DIA. (28"W x 28"L) - W/ 5"W x 8"L CUT OUT FOR SUMP
B	4	-	6 GAUGE STEEL FLAT STOCK - 3' x 5 7/8"
C	4	-	3' x 4.1"C CHANNEL FEET - 3' LONG
D	2	-	3' x 4.1"C CHANNEL BASE - 16" LONG
E	2	-	3' x 4.1"C CHANNEL END SUPPORT - 4' LONG



SIDE VIEW



END VIEW



BOTTOM VIEW

NOTES:
 1 STAND CONSTRUCTED FROM MILD STEEL AND PAINTED
 BLACK W/ 2 PART EPOXY COATING

REV	A	UPDATED TITLE BLOCK	1/5/09 MG
REV		REVISION DESCRIPTION	REV DATE
TITLE		SALES ORDER	
IHT 55 GALLON HORIZONTAL TANK STAND DETAILS		IHT 55 GALLON HORIZONTAL TANK STAND DETAILS	
CORPORATION OF AMERICA		CORPORATION OF AMERICA	
300 N TAYLOR ROAD		300 N TAYLOR ROAD	
GARRETT, IN 46738		GARRETT, IN 46738	
PHONE: (260) 357-3181		PHONE: (260) 357-3181	
FAX: (260) 357-3738		FAX: (260) 357-3738	
D. MYERS		D. MYERS	
9/2/08		9/2/08	
DWG NUMBER		DWG NUMBER	
IHS 055		IHS 055	
REV		REV	
A		A	



ASSMANN CORPORATION OF AMERICA