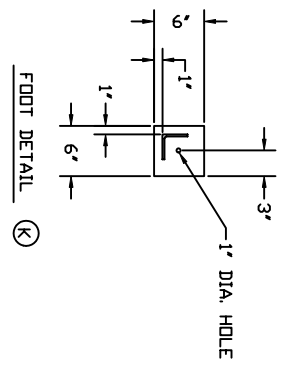
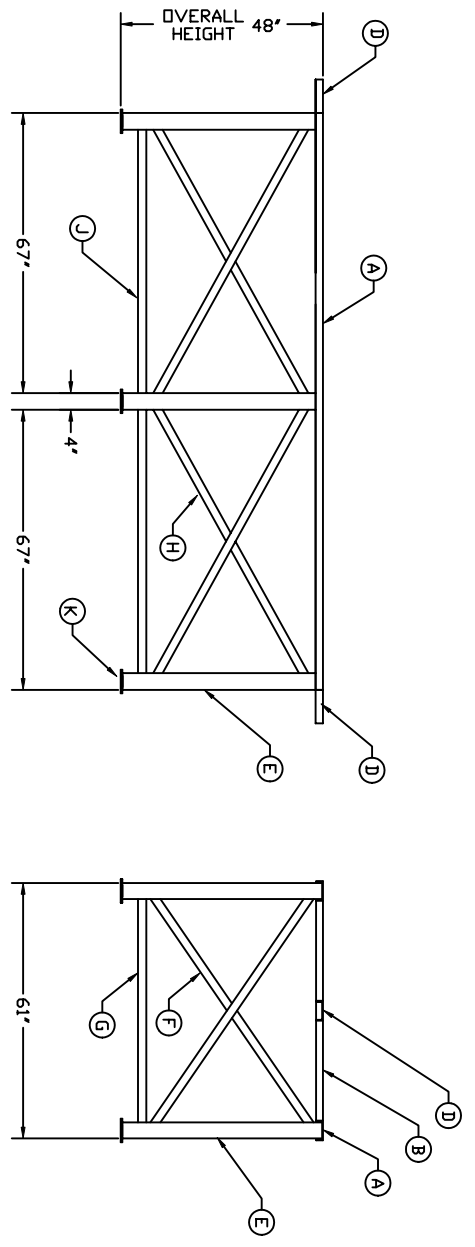
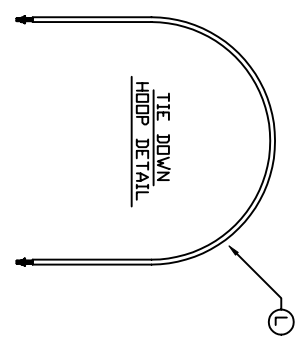
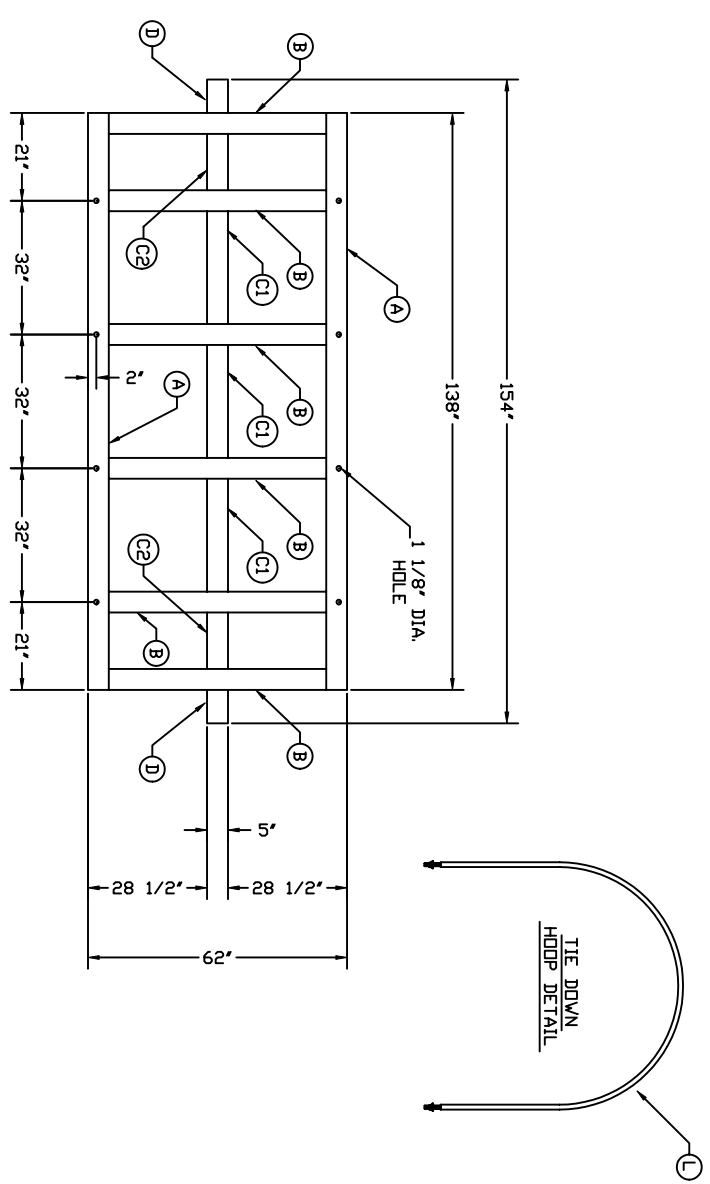


STAND MATERIAL LIST

MR	QTY	DESCRIPTION
A	2	MAIN RUNNERS: 138' X 5' - 6.7# 'C' CHANNEL WITH 1 1/8" DIA. HOLES DRILLED AT 21', 53', 85' & 117' ± 2" IN FROM SIDE
B	6	CENTER CROSS MEMBERS: 52' X 5' - 6.7# 'C' CHANNEL
C1	3	CENTER SUPPORTS
C2	2	13 1/2' X 5' - 6.7# 'C' CHANNEL
D	2	END SUPPORTS 8' X 5' - 6.7# 'C' CHANNEL
E	6	LEGS: 48' X 4' X 4' X 1/4" ANGLE IRDN
F	6	END 'X' BRACES: 70' X 2' X 1/4" FLAT STOCK
G	3	TIE BRACES: 59' X 2' X 1/4" FLAT STOCK
H	8	SIDE 'X' BRACES: 78' X 2' X 1/4" FLAT STOCK
J	8	SIDE TIE BRACES: 67' X 2' X 1/4" FLAT STOCK
K	4	FEET: 6' X 6' X 3/8" STEEL PLATE (SEE DETAIL)
L	4	TIE DOWN HOOPS: 144' X 1' I.D. X 1 1/4" O.D. PIPE ROLLED TO A 57' DIA. WITH (2) 27 1/2" LEGS INSERT & WELDED INTO EACH END (1) 6' X 1" DIA. THREADED ROD



REVISED	48" HIGH 1650 gal. HORIZONTAL TANK STAND	BY	S. Rowlison
SCALE	NONE	CUSTOMER APPROVAL	
DATE	1/21/92	DESIGN NO.	IHS1648
Assmann CORPORATION OF AMERICA		REV	