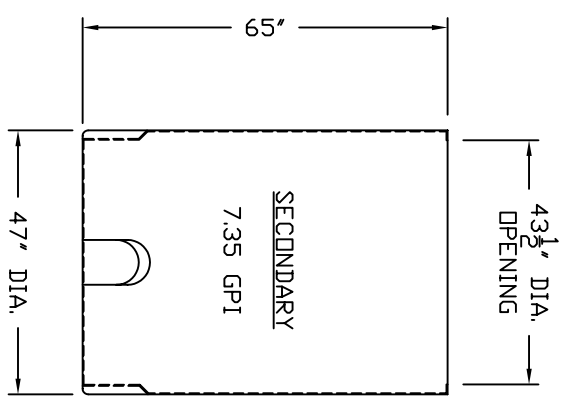
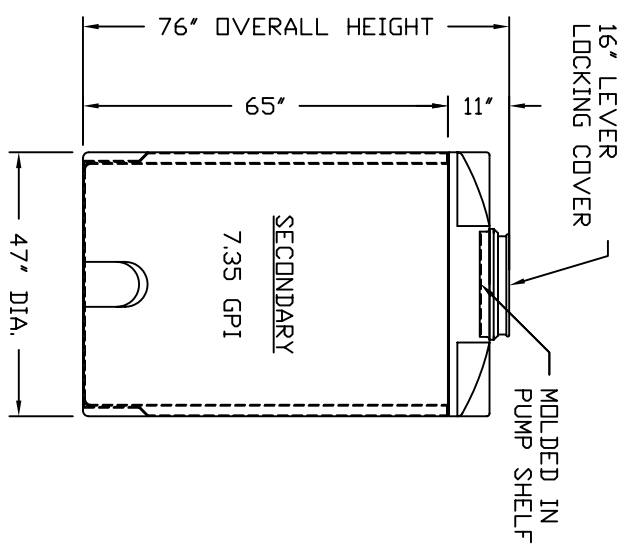
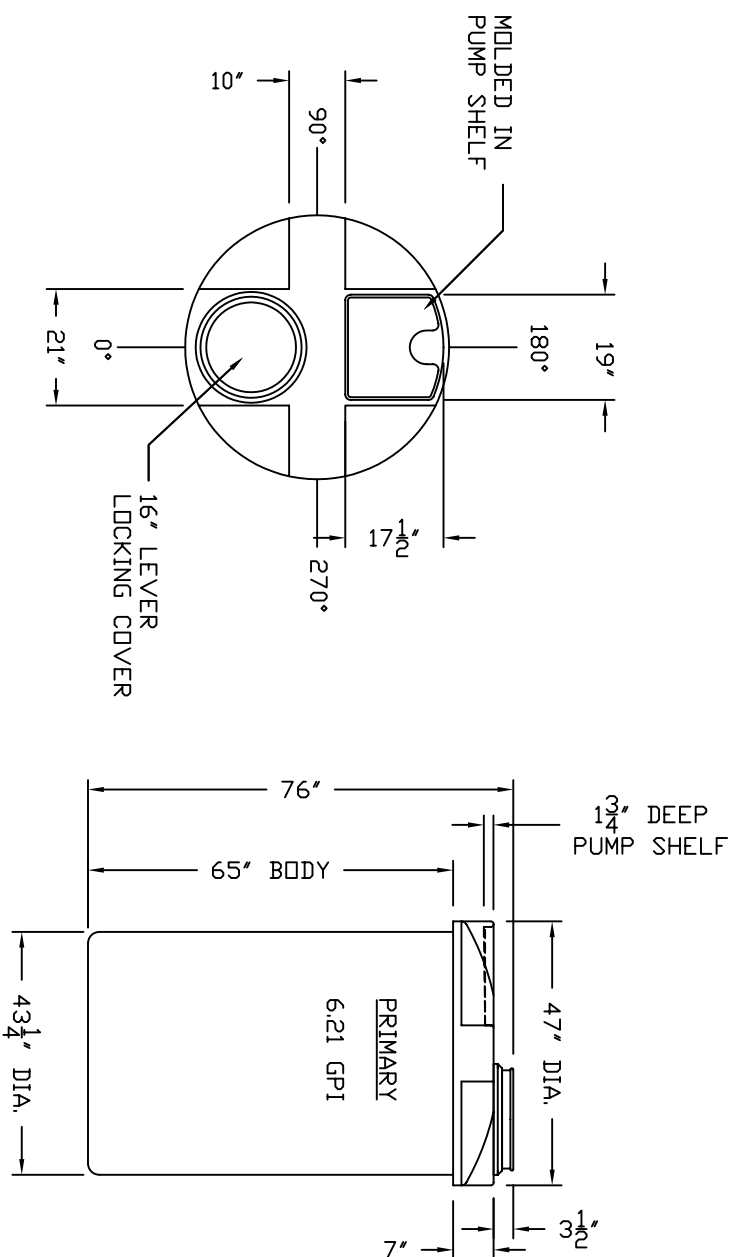


ACCESSORIES					
MK	SIZE	DESCRIPTION	DEG	ELEV	DOME



- NOTES:
- 1 PRIMARY CALCULATED GALLONS PER INCH: 6.21 GPI
 - 2 SECONDARY CALCULATED GALLONS PER INCH: 7.35 GPI
 - 3 CALCULATED GALLONS IN BODY: 403 GALLONS
 - 4 CALCULATED GALLONS IN BASIN: 478 GALLONS

- NOTES:
- 1 LOCATE FITTINGS FROM PLAN VIEW.
 - 2 TANK(S) MUST BE INSTALLED PER ASSMANN CORPORATION USAGE & GUIDELINES.
 - 3 FLEXIBLE EXPANSION JOINTS MUST BE USED ON ALL SIDEWALL CONNECTIONS.
 - 4 TANKS ARE BUILT PER ASTM D 1998.
 - 5 TANK SHOWN WITH 16" LEVERLOCKING COVER 7" THREADED CAP OPTIONAL

B	RE-NAMED DRAWING TO IMT 405, DELETED PUMPS FROM DRAWING	10/29/08 SR
A	INSERTED A NEW TITLE BLOCK & ROTATED TANK 180°	10/03/08 MG
REV	REVISION DESCRIPTION	REV DATE

		300 N TAYLOR ROAD GARRETT, IN 46738 PHONE: (260) 357-3181 FAX: (260) 357-3798	
PRIMARY VESSEL RESIN USED: POLYETHYLENE SPECIFIC GRAVITY: - TANK WEIGHT: - LBS. TANK COLOR: -	SP.G. MAX - LBS. -	SECONDARY VESSEL RESIN USED: POLYETHYLENE SPECIFIC GRAVITY: - TANK WEIGHT: - LBS. TANK COLOR: -	SP.G. MAX - LBS. -
TITLE: IMT 405 GALLON DOUBLE WALL STORAGE TANK		DRAWN BY: D. CRAIGER DWG NUMBER: IMT 405	DRAWN DATE: 6/21/09 REV: B

ALL DIMENSIONS ARE IN INCHES AND ARE ±3%