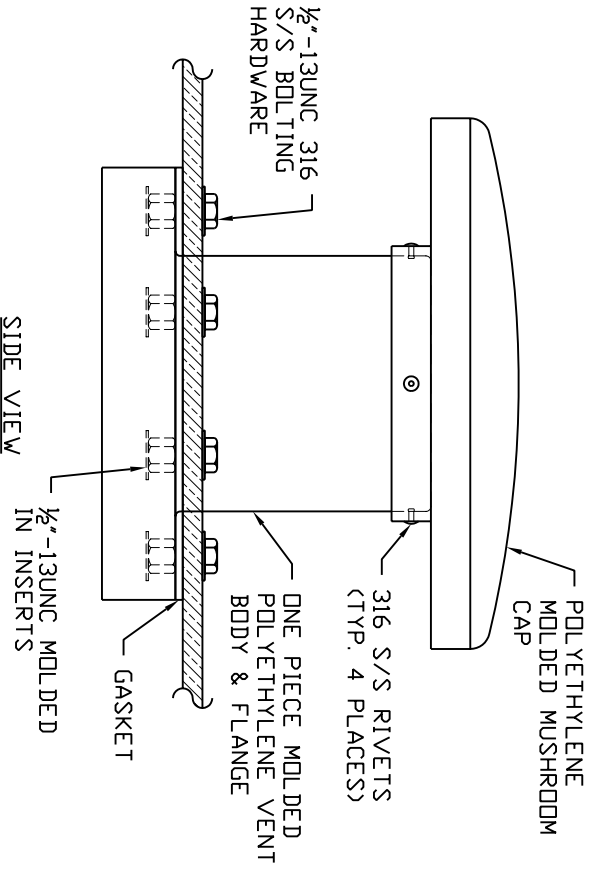


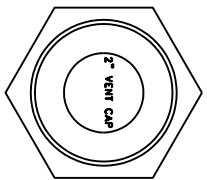
BREATHER SLOT
TYP. 4 PLACES
(CUT BY ASSMANN)

TOP VIEW

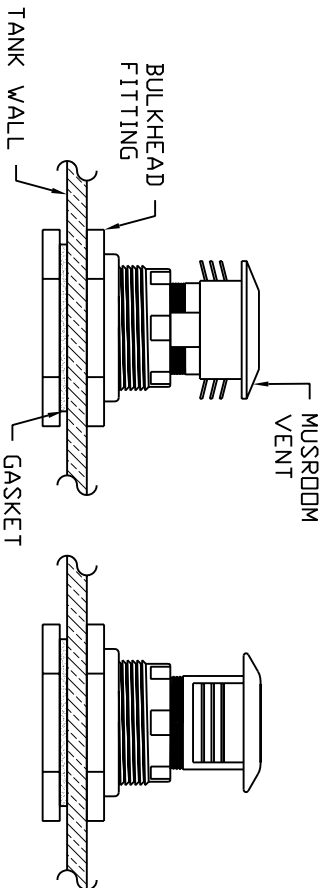


SIDE VIEW

- NOTES:
- 1) 4" & 6" MUSHROOM VENT AVAILABLE IN POLYETHYLENE ONLY.
 - 2) OPTIONAL POLY SCREEN AVAILABLE.
 - 3) BOLT HARDWARE & GASKET TO BE SUPPLIED COMPATIBLE W/ CHEMICAL BEING STORED



TOP VIEW



FRONT VIEW

SIDE VIEW

- NOTES:
- 1) MUSHROOM VENT IS ONLY AVAILABLE IN POLYPROPYLENE.
 - 2) OPTIONAL STAINLESS STEEL SCREEN AVAILABLE
 - 3) BULKHEAD FITTING IS STANDARD WITH EPDM GASKET.
 - 4) 3/4" MUSHROOM VENT IS AVAILABLE, 3/4" VENT DOES NOT HAVE BULKHEAD CONNECTION, VENT IS "DOUBLE NUT STYLE"

REV	DESCRIPTION	DATE
A	ADDED POLYETHYLENE VENTS TO DRAWING	9/5/08 DAM

Assmann
 CORPORATION OF AMERICA
 300 N TAYLOR ROAD
 GARRETT, IN 46738
 PHONE: (260) 357-3181
 FAX: (260) 357-3738
 4/2/07
 DRAWN BY: S. RIVALLISON
 TITLE: MUSHROOM VENT ASSEMBLY DETAIL
 P/P AND POLYETHYLENE VENTS
 ASSMANN CORPORATION OF AMERICA
 DWG NUMBER: MU-VENT
 REV: A