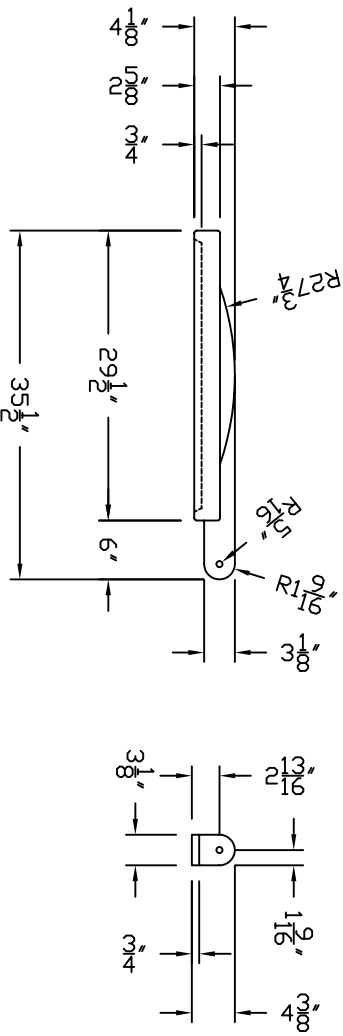
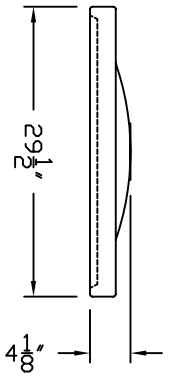


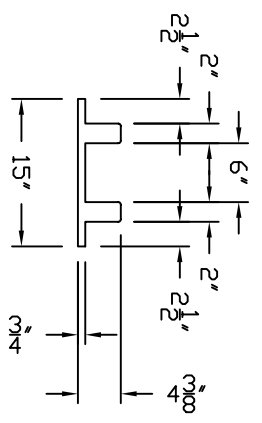
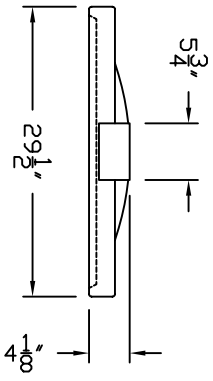
TOP VIEW



SIDE VIEW

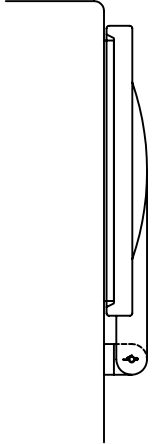


FRONT VIEW

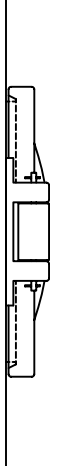


BACK VIEW


ASSEMBLY SIDE VIEW



ASSEMBLY BACK VIEW



- NOTES:
- 1 PART WEIGHT: 16 LBS
  - 2 RESIN USED: EXXON ESCORENE LINEAR POLYETHYLENE.
  - 3 TANK OPENING: 19 3/4" DIAMETER
  - 4 LID THICKNESS: .24-.30 APPROX

REV	REVISION DESCRIPTION	REV DATE
	 300 N TAYLOR ROAD GARRETT, IN 46738 PHONE: (260) 357-3181 FAX: (260) 357-3738	
	TITLE 22" HINGED MANWAY ASSEMBLY FOR TANKS 4000 GAL & BELOW ASSMANN CORPORATION	
	DRAWN BY: D. CRAGER CHECKED BY: D. CRAGER DATE: 12/10/03	
	DWG NUMBER: MK22	REV: -