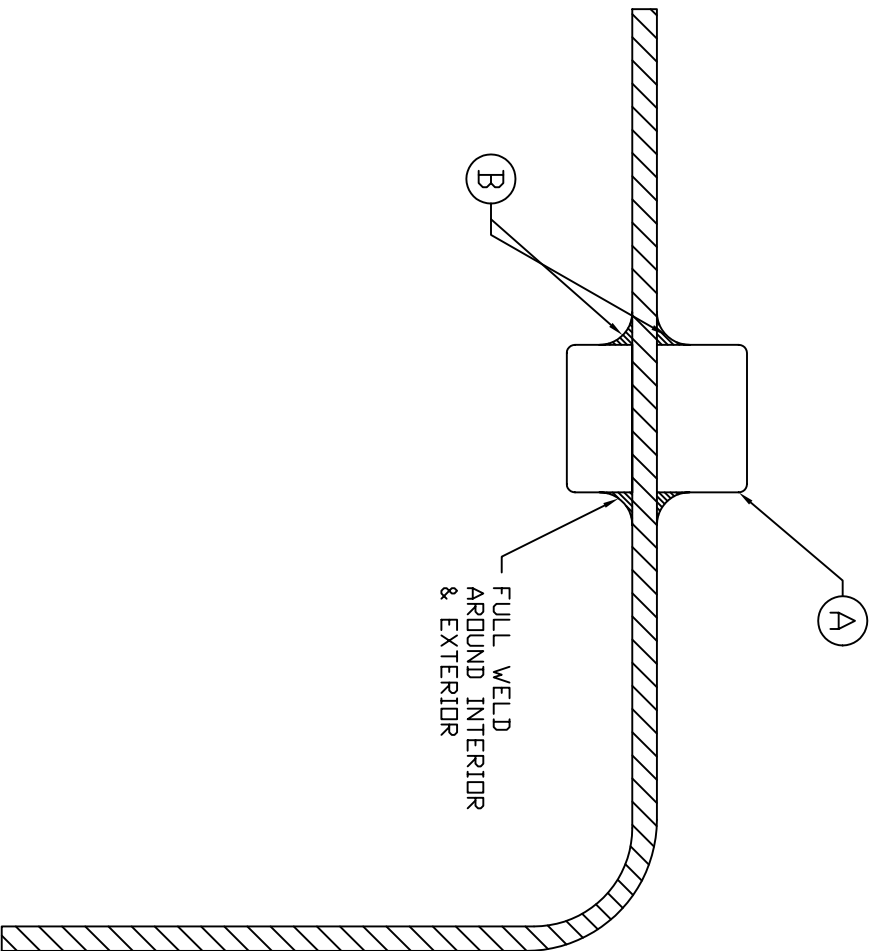


ACCESSORIES			
MK	QTY	SIZE	DESCRIPTION
A	1	-	POLYETHYLENE FULL FEMALE COUPLER
B	1	-	POLYETHYLENE WELD



NOTES:
 1 FLEXIBLE EXPANSION JOINTS MUST BE USED
 ON ALL WELDED CONNECTIONS.

REV	REVISION DESCRIPTION	REV DATE

		300 N TAYLOR ROAD GARRETT, IN 46738 PHONE: (260) 357-3181 FAX: (260) 357-3738
TITLE POLYETHYLENE FULL FEMALE WELDED COUPLER		DRAWN BY: S RYAN REVISED BY: S RYAN DATE: 3/4/04
DWG NUMBER: PECOUPLER		REV: -