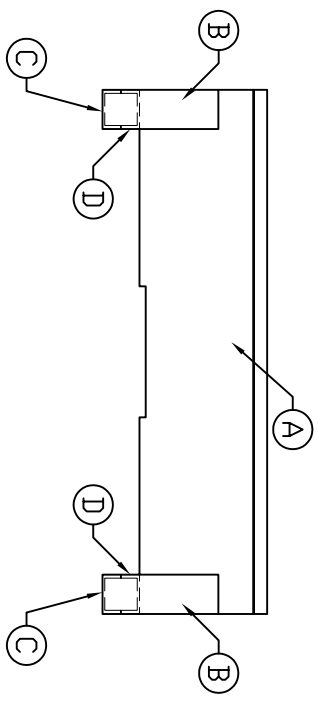
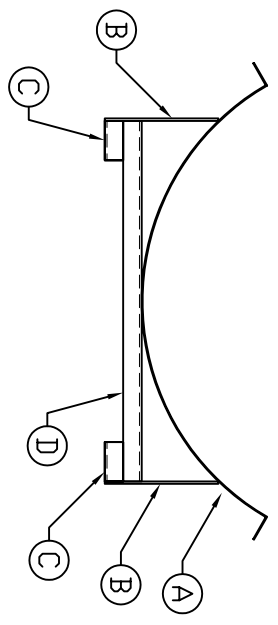


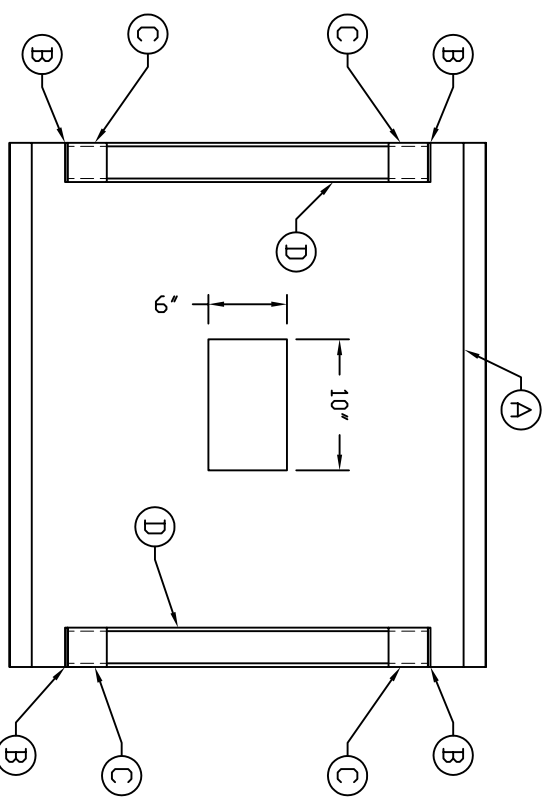
ACCESSORIES	
MK	DESCRIPTION
A	14 GAUGE STEEL ROLLED TO 38" DIA. (42"W x 40"L) - W/ 6"W x 10"L CUT OUT FOR SUMP
B	6 GAUGE STEEL FLAT STOCK - 3' x 83/4"
C	3' x 4.1 'C' CHANNEL FEET - 3' LONG
D	3' x 4.1 'C' CHANNEL BASE - 27 1/2' LONG



SIDE VIEW



END VIEW



BOTTOM VIEW

NOTES:
 1 STAND CONSTRUCTED FROM MILD STEEL AND PAINTED
 BLACK W/ 2 PART EPOXY COATING

REV A	UPDATED TITLE BLOCK	1/9/09 MG
	REVISION DESCRIPTION	REV DATE
TITLE: AHT 200 GALLON HORIZONTAL TANK STAND DETAILS ASSMANN CORPORATION OF AMERICA		
SALES ORDER: 300 N TAYLOR ROAD GARRETT, IN 46738 PHONE: (260) 357-3181 FAX: (260) 357-3738		
DRAWING DATE: 9/2/08 DRAWING NUMBER: AHS 200 REV: A		