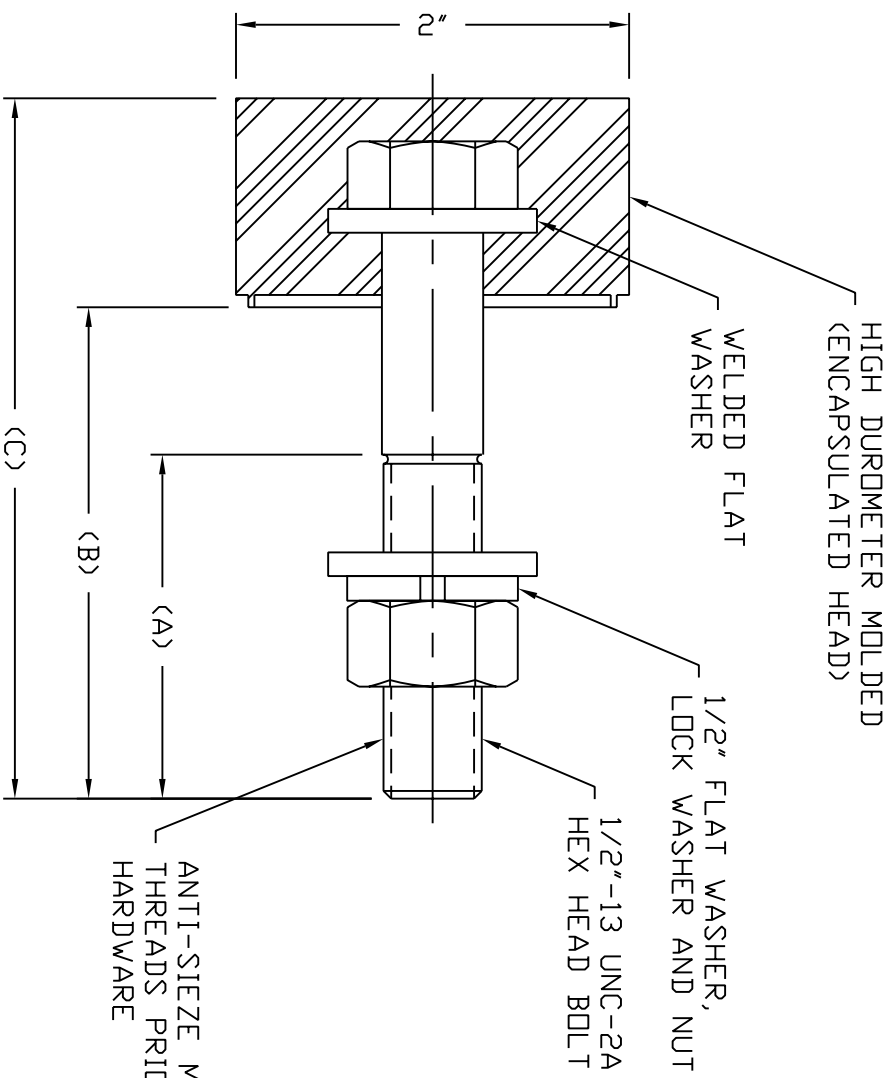


- NOTES:
- 1 TORQUE SPECS: 11-ft.lbs.
 - 2 ENCAPSULATED HEAD MOLDED TO BOLT.
 - 3 STANDARD SIZES ARE 2 1/2", 3", 3 1/2", AND 4"

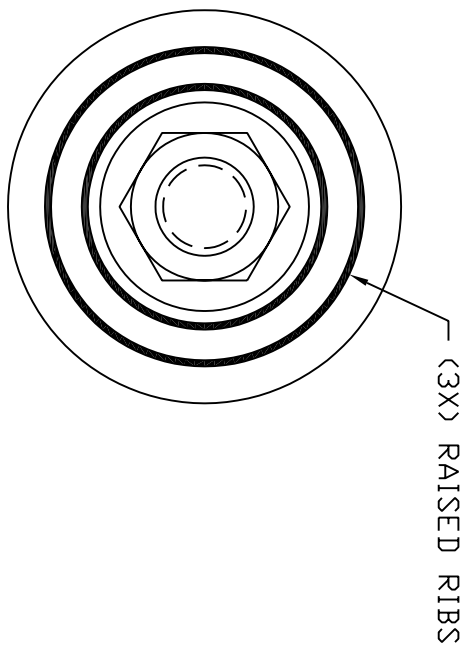
MATERIALS

- BOLTS**
- STANDARD - 316 STAINLESS STEEL
 - OPTIONAL - HASTELLOY
 - TITANIUM
 - ENCAPSULATED HEAD STANDARD
 - E.P.D.M.
 - OPTIONAL - VITON

PART #	DESCRIPTION
HBVHI	HASTELLOY BOLT/VITON HEAD
HBEHI	HASTELLOY BOLT/EPM HEAD
TBVHI	TITANIUM BOLT/VITON HEAD
TBEHI	TITANIUM BOLT/EPM HEAD
SBVHI	STAINLESS BOLT/VITON HEAD
SBEHI	STAINLESS BOLT/EPM HEAD



ANTI-SIEZE MUST BE PLACED ON THREADS PRIOR TO ATTACHING OTHER HARDWARE




NOTE: LENGTH MUST BE SPECIFIED WHEN ORDERING INDIVIDUAL BOLTS

SIZE	THREAD LENGTH (A)	BOLT LENGTH (B)	OVERALL LENGTH (C)
4"	1 1/4"	3 1/2"	4 1/2"
3 1/2"	1 1/4"	3"	4"
3"	1 1/4"	2 1/2"	3 1/2"
2 1/2"	1 1/4"	2"	3"

ACCESSORIES		DESCRIPTION
MK	QTY	SIZE

ADDED PART NUMBER AND NOTES		REV	DATE
A			11/9/09


Assmann
 CORPORATION OF AMERICA
 300 N TAYLOR ROAD GARRETT, IN 46738
 PHONE (260) 357-3181
 FAX (260) 357-3738

DRAWN BY: S HAMMAN
 DRAWN DATE: 11/21/02
 DWG NUMBER: DONKER
 TITLE: DONKER BOLT DETAIL
