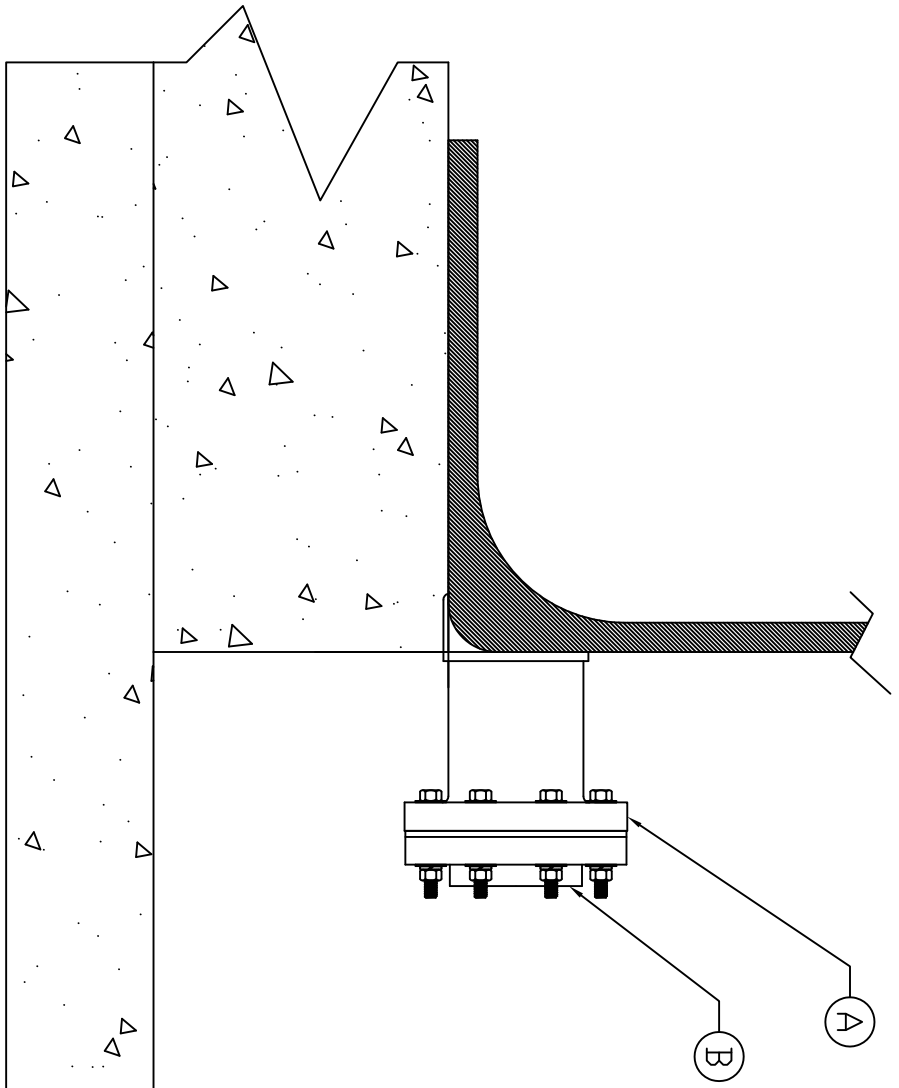


- NOTES:
- 1) ASSEMBLY IS AVAILABLE IN 3' OR 4' SIZE.
 - 2) GASKET MATERIAL AVAILABLE: EPDM, BUNA, VITON, XLPE.
 - 3) FITTING MATERIAL AVAILABLE: PVC, CPVC, POLYPRD.
 - 4) HARDWARE MATERIAL AVAILABLE: S/S, TITANIUM, HASTELLOY.
 - 5) TO CALCULATE TANK PAD DIAMETER ON MODELS NOT LISTED USE TANK DIAMETER PLUS 3% ROUNDED UP TO NEAREST NUMBER.
 - 6) ASSMANN RECOMMENDS THAT AT LEAST SIX (6) LAYERS OF ROOF FELT BE PLACED BETWEEN THE TANK AND ITS INTENDED FOUNDATION.



NOTE: IN ORDER TO MAINTAIN FACTORY WARRANTY FLEXIBLE EXPANSION JOINT AND PROPER SUPPORT IS REQUIRED DIRECTLY AFTER ISOLATION VALVE. SUPPORT MUST BE INSTALLED AFTER EXPANSION JOINT.

ACCESSORIES

MK	QTY	SIZE	DESCRIPTION
A	1	3-4	XLPE FULL DRAIN FLANGE ADAPTER
B	1	3-4	FLANGE WITH GASKET AND HARDWARE

MINIMUM CONCRETE PAD DIAMETER RECOMMENDED			
TANK DIAMETER	PAD DIAMETER	PAD WITH RESTRAINT	
86"	89"	117"	
96"	99"	127"	
105"	109"	137"	
119"	123"	151"	
143"	148"	176"	

MINIMUM CONCRETE PAD NOTCH WIDTH RECOMMENDED					
TANK DIAMETER	86"	96"	105"	119"	143"
NOTCH WIDTH 3' FDD	10 1/2"	10 1/2"	10 1/2"	10 1/2"	10 1/2"
NOTCH WIDTH 4' FDD	12"	12"	12"	12"	12"

MINIMUM CONCRETE PAD HEIGHT RECOMMENDED					
TANK DIAMETER	86"	96"	105"	119"	143"
PAD HEIGHT 3' FDD	7"	7"	7"	7"	7"
PAD HEIGHT 4' FDD	8"	8"	8"	8"	8"

REV	DESCRIPTION	DATE
A	ADDED PAD DIMENSIONS, ADDED FLANGE CONNECTION	10/18/12


Assmann
 CORPORATION OF AMERICA
 300 N TAYLOR ROAD
 GARRETT, IN 46738
 PHONE: (260) 357-3181
 FAX: (260) 357-3798
 TITLE POLYETHYLENE FULL DRAIN OUTLET
 SALES ORDER
 DRAWN BY: SRDVL/SDN
 DATE: 4/22/09
 DWG NUMBER: FDD
 REV: A