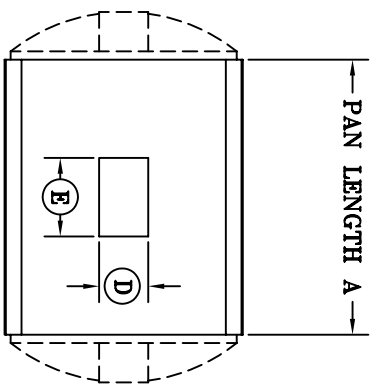
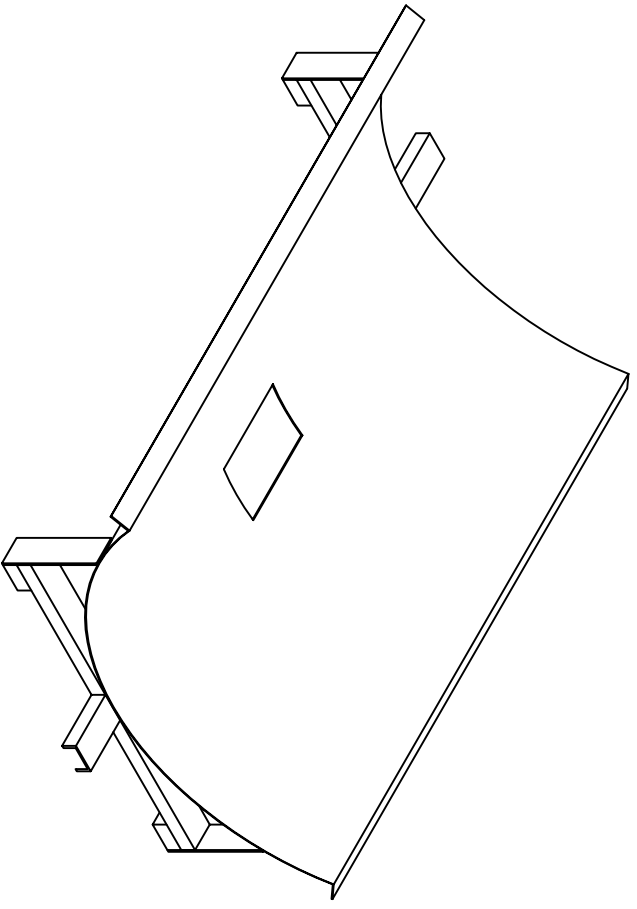
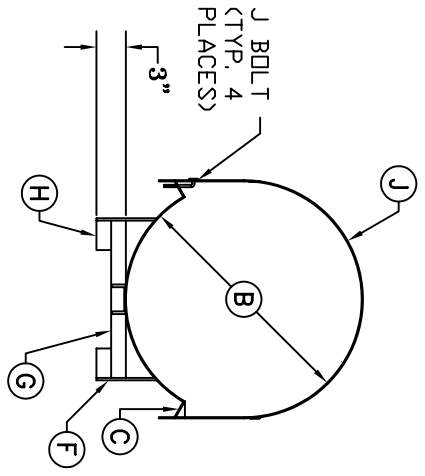
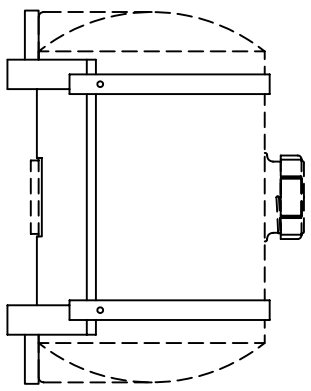


# DESIGN DATA

UNIT CODE	DIAMETER	PAN DIMENSION / MATERIAL		ROLL DIA.	LIP EDGE	CUT OUT	LEGS	BASE	FOOT	STRAP	END SUPPORT		
		A	B										
IHS 025	24" DIA.	28"	14"	14 GAUGE	24" DIA.	2" x 90°	5"	8"	3" x 5 <sup>7</sup> / <sub>8</sub> "	3" x 16"	3" x 3"	48"	3" x 4"
IHS 055	24" DIA.	28"	28"	14 GAUGE	24" DIA.	2" x 90°	5"	8"	3" x 5 <sup>7</sup> / <sub>8</sub> "	3" x 16"	3" x 3"	48"	3" x 4"
IHS 110	30" DIA.	34"	36"	14 GAUGE	30" DIA.	2" x 90°	5"	8"	3" x 8"	3" x 22 <sup>1</sup> / <sub>2</sub> "	3" x 3"	60"	3" x 4"
IHS 150	32" DIA.	36"	42"	14 GAUGE	32" DIA.	2" x 90°	5"	8"	3" x 8"	3" x 23 <sup>1</sup> / <sub>2</sub> "	3" x 3"	64"	3" x 4"
AHS 150	38" DIA.	42"	30"	14 GAUGE	38" DIA.	2" x 90°	6"	10"	3" x 8 <sup>3</sup> / <sub>4</sub> "	3" x 27 <sup>1</sup> / <sub>2</sub> "	3" x 3"	72"	N/A
IHS 200	32" DIA.	36"	56"	14 GAUGE	32" DIA.	2" x 90°	5"	8"	3" x 8"	3" x 23 <sup>1</sup> / <sub>2</sub> "	3" x 3"	64"	3" x 4"
AHS 200	38" DIA.	42"	40"	14 GAUGE	38" DIA.	2" x 90°	6"	10"	3" x 8 <sup>3</sup> / <sub>4</sub> "	3" x 27 <sup>1</sup> / <sub>2</sub> "	3" x 3"	76"	N/A
IHS 300	38" DIA.	42"	60"	14 GAUGE	38" DIA.	2" x 90°	6"	10"	3" x 8 <sup>3</sup> / <sub>4</sub> "	3" x 27 <sup>1</sup> / <sub>2</sub> "	3" x 3"	76"	N/A
IHS 500	48" DIA.	52"	60"	12 GAUGE	48" DIA.	2" x 90°	6"	10"	3" x 9 <sup>3</sup> / <sub>4</sub> "	3" x 33 <sup>1</sup> / <sub>2</sub> "	3" x 3"	96"	3" x 6"

LEGS	BASE	FOOT	STRAP	END SUPPORT
6 GAUGE FLAT STOCK	3" x 4.1 "C" CHANNEL	3" x 4.1 "C" CHANNEL	STAINLESS STEEL BANDING	3" x 4.1 "C" CHANNEL



REV	DESCRIPTION	REV DATE
A	1 UPDATED TITLE BLOCK AND TEXT 2 REMOVED IHT 110 FROM LIST	9/2/08 dam

**Assmann**  
CORPORATION OF AMERICA

300 N TAYLOR ROAD  
GARRETT, IN 46738  
PHONE: (260) 357-3181  
FAX: (260) 357-3738

BRANN, JR.  
D. CRAGER  
DRAWN DATE:  
3/26/93

TITLE: STANDARD CYLINDRICAL  
HORIZONTAL TANK STAND DETAILS

ASSMANN CORPORATION OF AMERICA

DWG NUMBER: IHS 001

REV: A