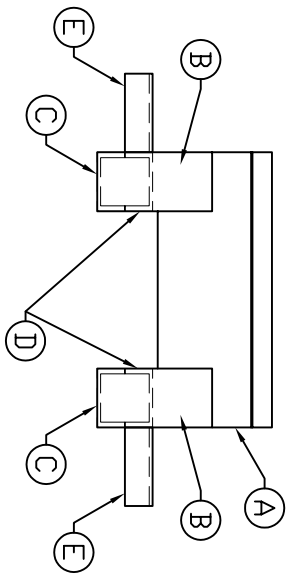
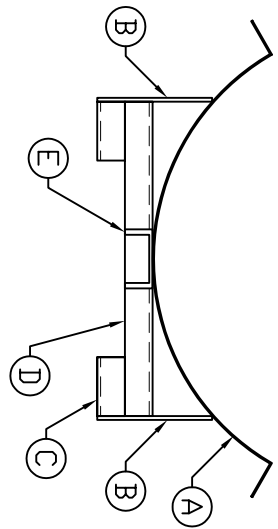


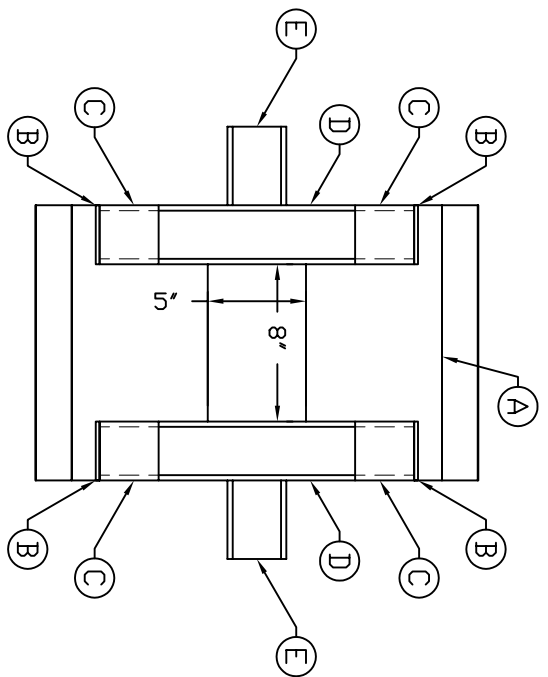
ACCESSORIES		
MK	QTY	SIZE DESCRIPTION
A	1	14 GAUGE STEEL ROLLED TO 24" DIA. (28"W x 14"L) - W/ 5"W x 8"L CUT OUT FOR SUMP
B	4	6 GAUGE STEEL FLAT STOCK - 3' x 5 7/8"
C	4	3' x 4.1"C CHANNEL FEET - 3' LONG
D	2	3' x 4.1"C CHANNEL BASE - 16" LONG
E	2	3' x 4.1"C CHANNEL END SUPPORT - 4' LONG



SIDE VIEW




END VIEW



BOTTOM VIEW

NOTES:
 1 STAND CONSTRUCTED FROM MILD STEEL AND PAINTED
 BLACK W/ 2 PART EPOXY COATING

REV A	UPDATED TITLE BLOCK	1/5/09 MG
	REVISION DESCRIPTION	REV DATE
 Assmann CORPORATION OF AMERICA 300 N TAYLOR ROAD GARRETT, IN 46738 PHONE: (260) 357-3181 FAX: (260) 357-3738		
TITLE: IHT 25 GALLON HORIZONTAL TANK STAND DETAILS ASSMANN CORPORATION OF AMERICA		
SALES ORDER		REV DATE
BRANNI, JIM		9/2/08
D. MYERS		DWG NUMBER
IHS 025		REV
A		