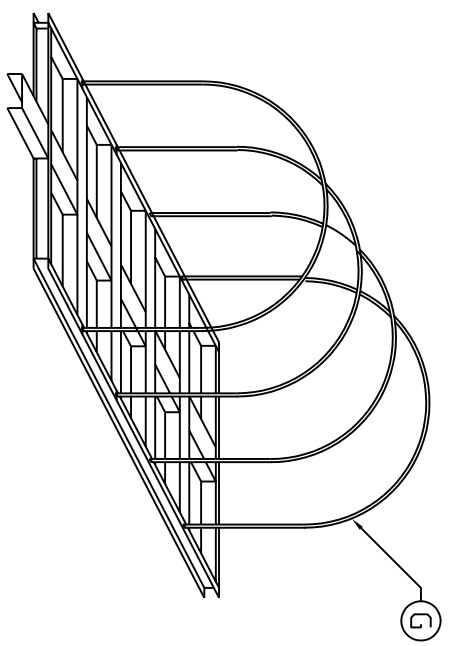


ACCESSORIES			DESCRIPTION
MK	QTY	SIZE	DESCRIPTION
A	2	-	138" - 2" X 3" FORMED 10 GA. "C" CHANNEL WITH 4 EA. 1 1/8" DIA. HOLES AND 4 EA. 1 1/8" DIA. SLOTS PER DRAWING LOCATION
B	2	-	56" - 2" X 3" FORMED 10 GA. "C" CHANNEL
C	1	-	24" - 3" X 8" FORMED 10 GA. "C" CHANNEL
D	2	-	15" - 3" X 8" FORMED 10 GA. "C" CHANNEL
E	2	-	56" - 3" X 8" FORMED 10 GA. "C" CHANNEL
F	4	-	HODPS FORMED FROM 1" I.D. X 1 1/4" O.D. PIPE ROLLED TO A 57" DIA. WITH (2) 27 1/2" LEGS INSERTED & WELDED INTO EACH END (2) 6" X 1" DIA. THREADED ROD
G	2	-	9" - 3" X 8" FORMED 10 GA. "C" CHANNEL



B	ADDED END EXTENSIONS TO STAND	1/14/10 SR
A	UPDATED TITLE BLOCK	1/13/09 MG
REV	REVISION DESCRIPTION	REV DATE
SPECS ORDER		
300 N TAYLOR ROAD GARRETT, IN 46738 PHONE: (260) 357-3181 FAX: (260) 357-3738		
DRAWN BY: D. CRAGER DRAWN DATE: 3/25/93		
TITLE: IHT 1650 GAL. CYLINDRICAL HORIZONTAL TANK STAND		DWG NUMBER: IHS 1650
		REV: B