

ACCESSORIES		DESCRIPTION
MK	QTY	SIZE
A	1	-
B	12	-
C	12	-
D	2	-
E	2	-
F	6	-
G	2	-
H	4	-

DESCRIPTION

PAN: 171' X 137' TO BE FORMED FROM 12 GA. SHEET STEEL & ROLLED TO A 64" DIA.

VERTICAL BRACES: 19" LONG X 6" WIDE X 3/16" THICK FLAT STOCK

ANGLED BRACES: 3/16" THICK FLAT STOCK CUT TO FIT 32" RADIUS

UPPER PAN LIP / STRAP ANCHOR POINT 168" LONG X 4" WIDE X 1/4" THICK "C" CHANNEL WITH 5/8" HOLES TO MATCH TIE DOWN BANDS

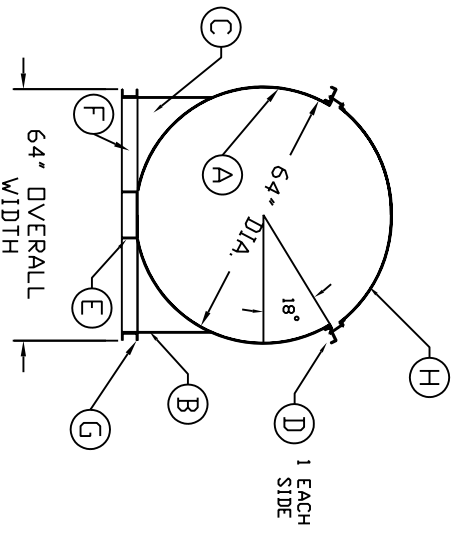
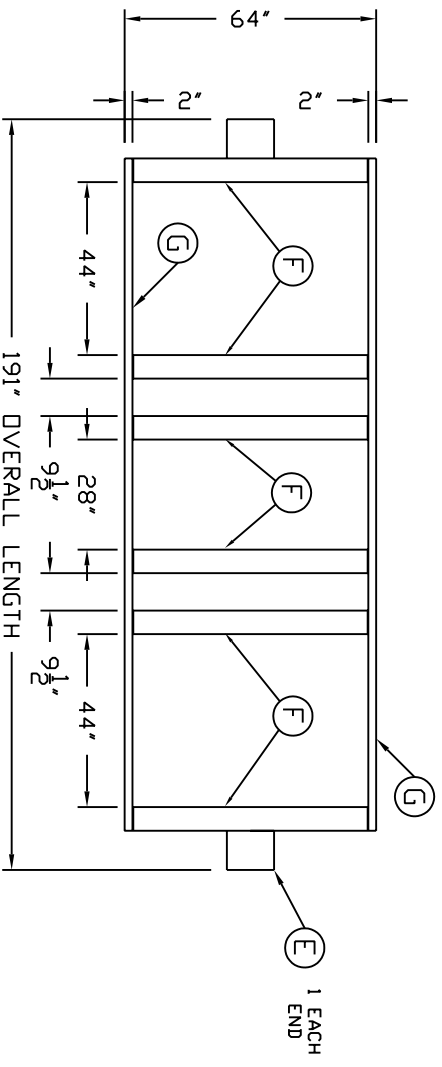
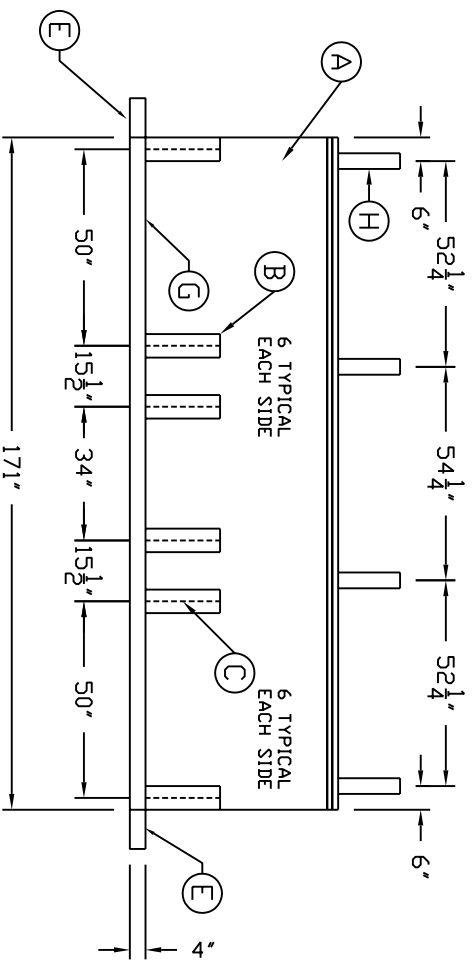
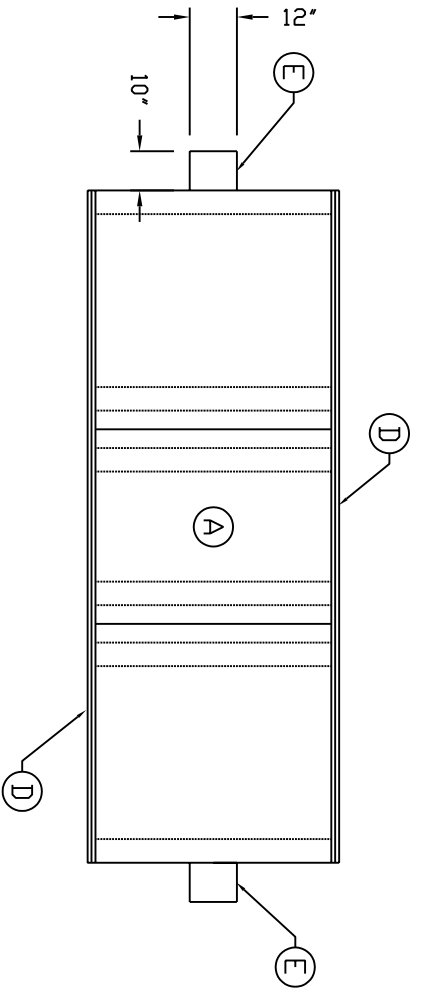
END SUPPORTS: 10" LONG X 4" TALL X 12" WIDE FORMED "C" CHANNEL

SADDLE SUPPORTS: 60" LONG X 4" TALL X 6" WIDE FORMED "C" CHANNEL

FRAME SIDE RAILS: 171" LONG X 4" TALL X 2" WIDE FORMED "C" CHANNEL

ALL "C" CHANNEL TO BE FORMED FROM 10 GA SHEET STEEL WITH THE EXCEPTION OF UPPER PAN LIP

TIE DOWN BANDS: 4" WIDE X 55" LONG X 12 GA. ROLLED TO A 64" DIA. 1 1/2" X 1 1/2" ANGLE IRON CLIPS WITH TWO 5/8" DIA HOLES EVENLY SPACED EACH END



REV	DESCRIPTION	DATE
D	CHANGED ITEM (D) BACK TO 4" FROM 3", CHANGED BAND LENGTH ON ITEM (H) FROM 59" TO 55"	8/5/09 SR
C	CHANGED BAND LENGTH, CHANGED TOP "C" CHANNEL	4/6/09 SR
B	CORRECTED ERRORS IN CALLOUT, ADDED DIMENSIONS	3/12/09 SR
A	UPDATED TITLE BLOCK	1/13/09 MG
REV	REVISION DESCRIPTION	REV DATE

**300 N TAYLOR ROAD**  
**GARRETT, IN 46738**  
 PHONE: (260) 357-3181  
 FAX: (260) 357-3738

**300 N TAYLOR ROAD**  
**Garrett, IN 46738**  
 PHONE: (260) 357-3181  
 FAX: (260) 357-3738

BRAND: IHS  
 D: CRAGER  
 DATE: 3/25/93

DWG NUMBER: IHS 2500  
 REV: D