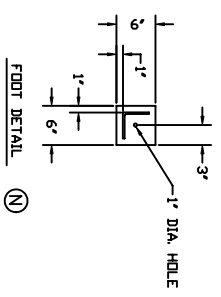
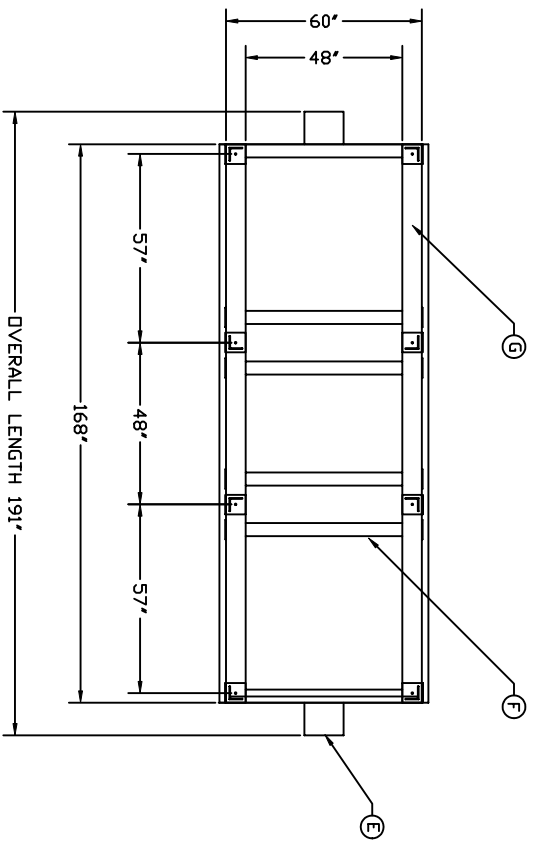
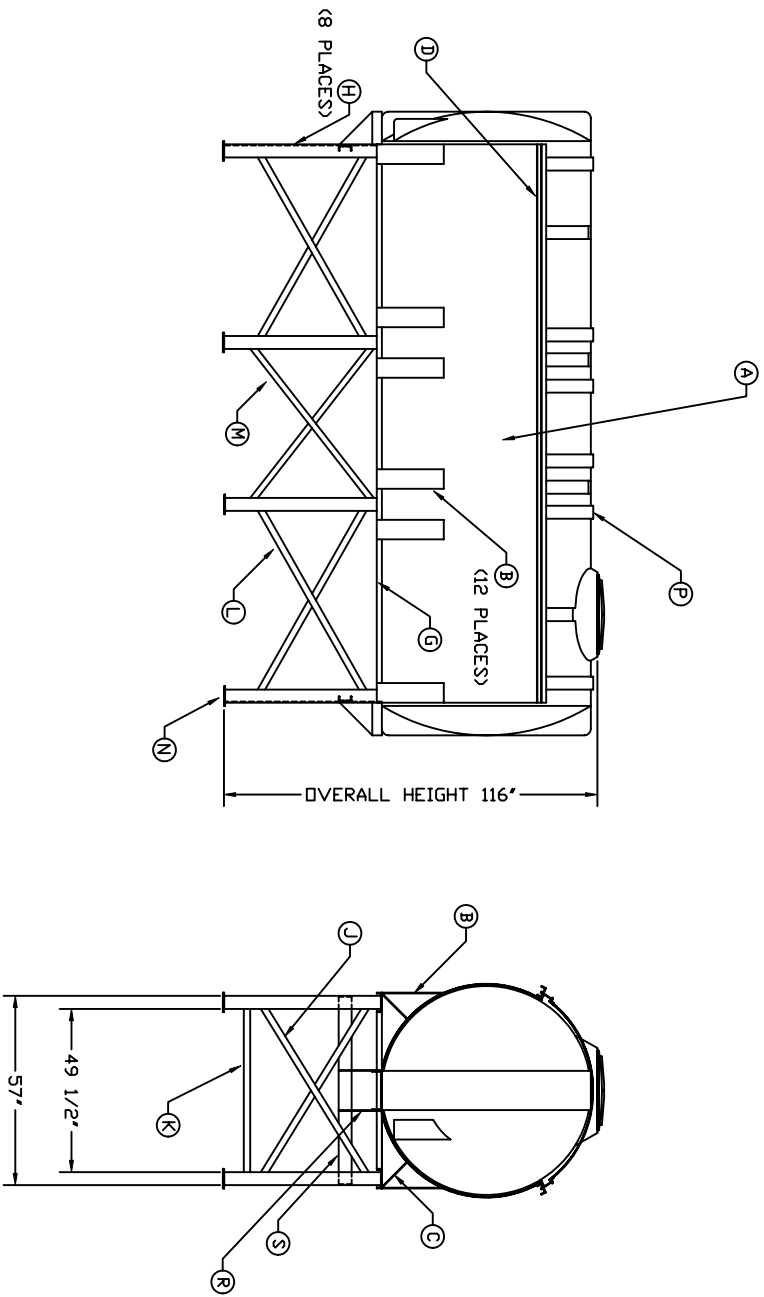


STAND MATERIAL LIST

MATERIAL	DESCRIPTION	QTY
A	PAN: 168' X 120' TO BE FORMED FROM 12ga SHEET STEEL & ROLLED TO A 64" DIA.	1
B	SIDE BRACES: 6' X 21' X 3/16" FLAT STOCK	12
C	ANGLE BRACES: 6' X 10' X 3/16" FLAT STOCK	12
D	PAN LIPS: 168' - 4' X 5.0 "C" CHANNEL	2
E	END SUPPORTS: 13 1/2" - 12 X 20.7 "C" CHANNEL	2
F	SADDLE SUPPORTS: 47 5/8" - 4" X 5.4# "C" CHANNEL	6
G	MAIN RUNNERS: 168' - 6' X 10.5# "C" CHANNEL	2
H	LEGS: 47 1/4" X 4' X 4' X 1/4" ANGLE IRON	8
J	END "X" BRACES: 64 1/2" X 2' X 1/4" FLAT STOCK	8
K	TIE BRACES: 54' X 2' X 1/4" FLAT STOCK	4
L	SIDE "X" BRACES: 67' X 2' X 1/4" FLAT STOCK	8
M	MIDDLE "X" BRACES: 51 3/4' X 2' X 1/4" FLAT STOCK	4
N	FEET: 6' X 6' X 3/8" STEEL PLATE (SEE DETAIL)	6
P	TIE DOWN BANDS: 4' X 78' X 12ga. ROLLED TO A 64" DIA. 1 1/2" X 1 1/2" ANGLE IRON LIPS (EACH END)	6
R	WING SUPPORT BRACE: 10' X 10' TRIANGLE SHAPED SUPPORT BRACE 1/4" FLAT STOCK	4
S	CROSS SUPPORT BRACE: 56' - 4' X 5.0 "C" CHANNEL	2



PWT 2500 gal. ELEVATED HORIZONTAL
 HORIZONTAL TANK STAND
 DATE: 4/22/93
 DRAWN BY: NONE
 CHECKED BY: D. CRAGER
 ASSURANCE CORPORATION OF AMERICA
 IHS 2548