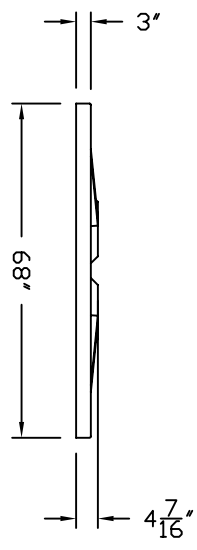
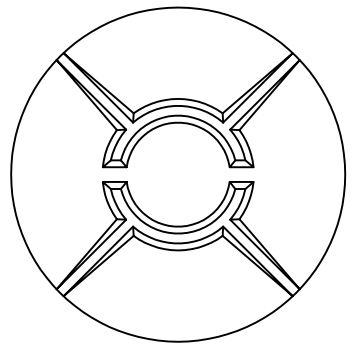
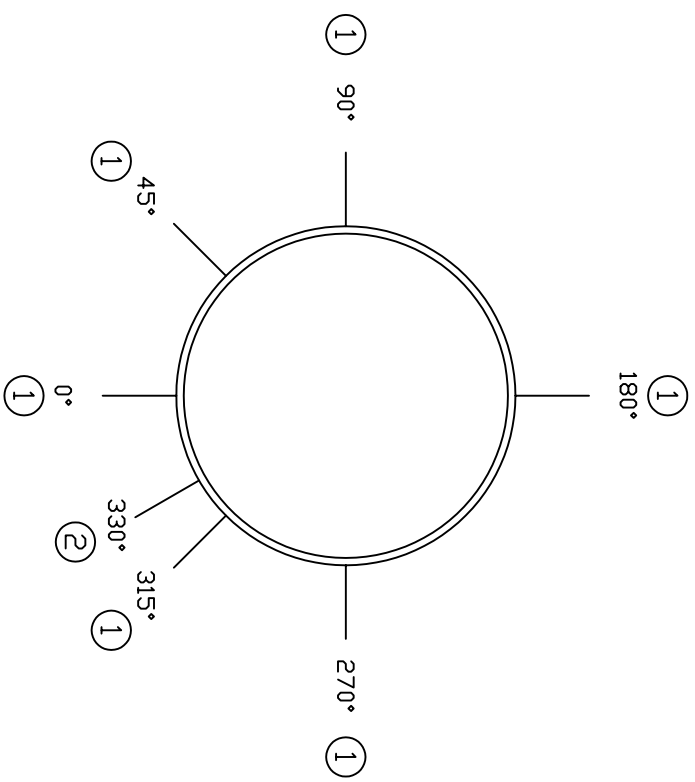


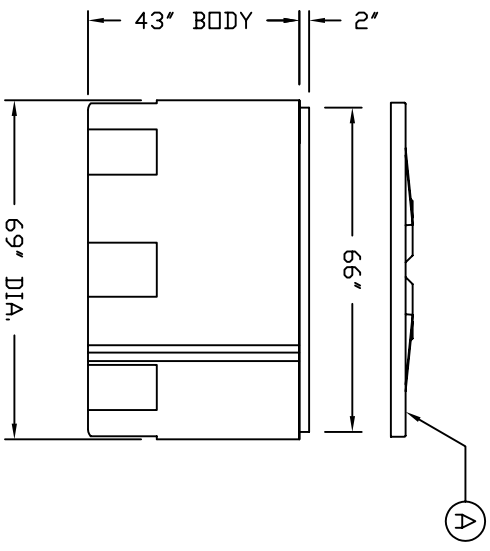
ACCESSORIES					
MK	SIZE	DESCRIPTION	DEG	ELEV	DOME
A	-	OPEN TOP COVER	-	-	X

- NOTES:
- 1 LOCATE FITTINGS FROM PLAN VIEW.
 - 2 TANK(S) MUST BE INSTALLED PER ASSMANN CORPORATION USAGE & GUIDELINES.
 - 3 FLEXIBLE EXPANSION JOINTS MUST BE USED ON ALL SIDEWALL CONNECTIONS.
 - 4 TANKS ARE BUILT PER ASTM D 1998.

- NOTES:
- 1 11" X 14" SIDEWALL FITTING FLATS (6 PLACES)
 - 2 MOLDED IN VOLUME MARKER



LID DESIGN



REV	REVISION DESCRIPTION	REV DATE

Assmann
CORPORATION OF AMERICA

300 N TAYLOR ROAD
GARRETT, IN 46728
PHONE: (260) 337-3181
FAX: (260) 337-3728

TITLE: IDT 680 GAL. OPEN TOP
VERTICAL STORAGE TANK

DESIGNED BY	DATE	CHECKED BY
S. ROWLISON	2/7/05	

RESIN USED	POLYETHYLENE
TANK WEIGHT	- LBS.
DWG NUMBER	IDT 680
REV	-

ALL DIMENSIONS ARE IN INCHES AND ARE ±3%