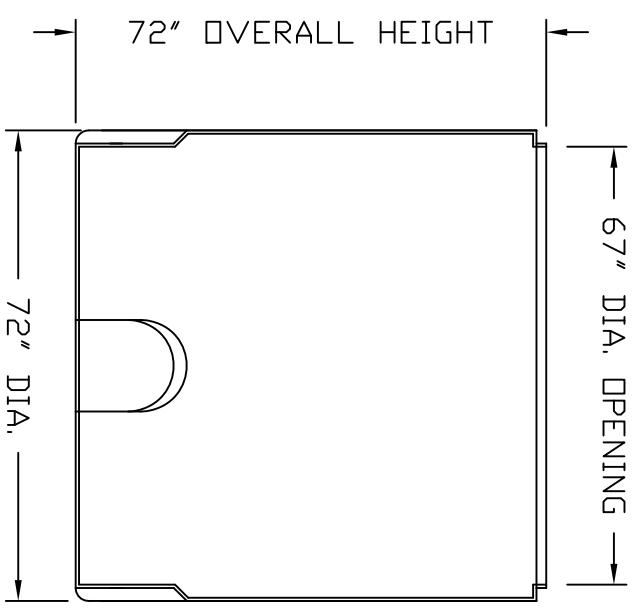
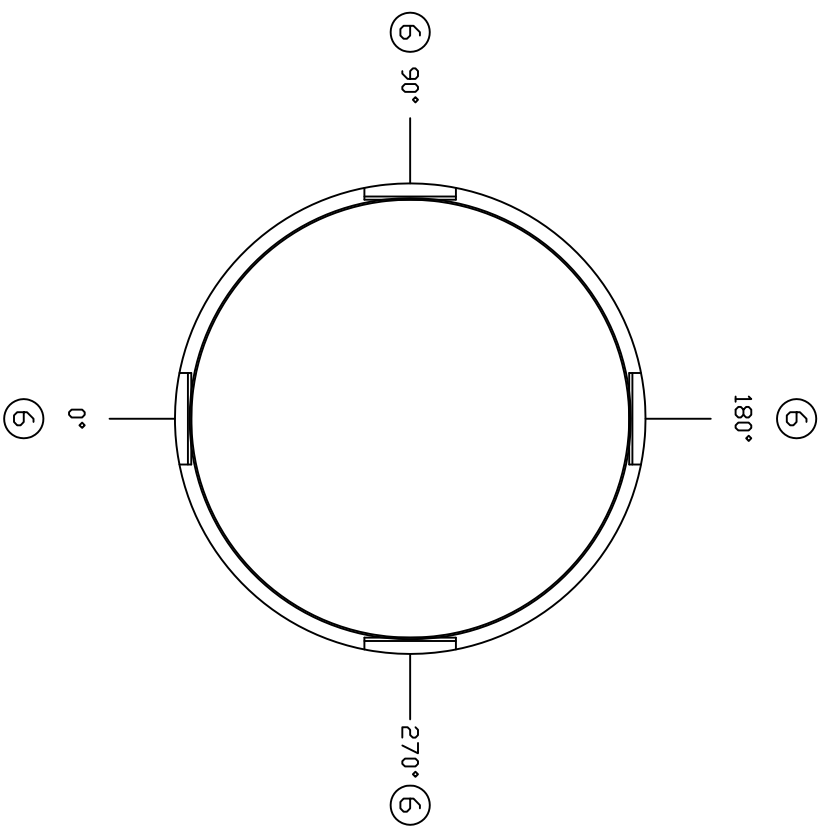


ACCESSORIES					
MK	SIZE	DESCRIPTION	DEG	ELEV	DOME



- NOTES:
- 1 LOCATE FITTINGS FROM PLAN VIEW.
 - 2 TANK(S) MUST BE INSTALLED PER ASSMANN CORPORATION USAGE & GUIDELINES.
 - 3 FLEXIBLE EXPANSION JOINTS MUST BE USED ON ALL SIDEWALL CONNECTIONS.
 - 4 TANKS ARE BUILT PER ASTM D 1998.
 - 5 CALCULATED CAPACITY: 1254 GALLONS
 - 6 LOWER FITTING FLATS 14" X 14" APPROX
 - 7 THIS TANK IS DESIGNED FOR SECONDARY CONTAINMENT ONLY AND SHOULD NOT BE USED AS A PRIMARY TANK.

REV	REVISION DESCRIPTION	REV DATE
-----	----------------------	----------

Assmann
CORPORATION OF AMERICA

300 N TAYLOR ROAD
GARRETT, IN 46728
PHONE: (860) 357-3181
FAX: (860) 357-3728

TITLE	IRD 1050 CYLINDRICAL SECONDARY CONTAINMENT BASIN
DRAWN BY	SRAWLISON
ISSUE DATE	7/23/14
SALES ENGINEER	
TANK WEIGHT	LBS.
TANK CENTER	
DWG NUMBER	IRD 1050
REV	Ø

ALL DIMENSIONS ARE IN INCHES AND ARE ±.3%