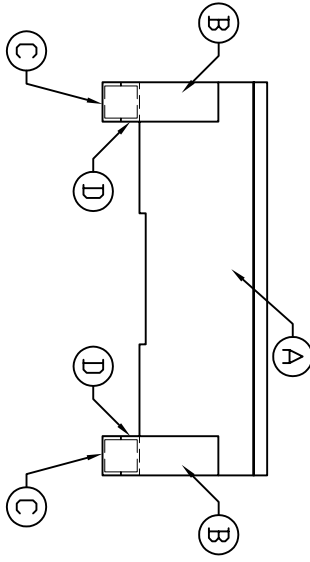
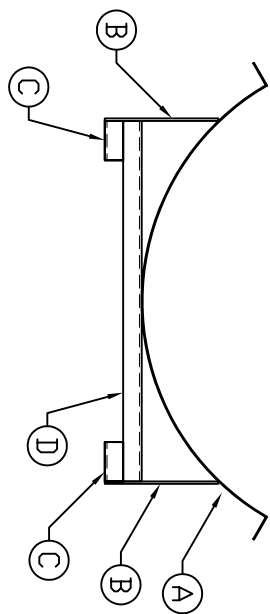


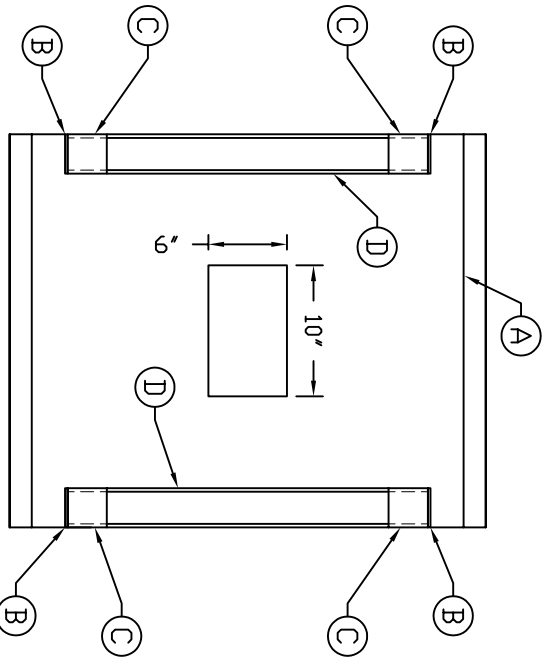
ACCESSORIES		DESCRIPTION
MK	QTY	SIZE
A	1	-
B	4	-
C	4	-
D	2	-
		14 GAUGE STEEL ROLLED TO 38" DIA. (42"W x 30"L) - W/ 6"W x 10"L CUT OUT FOR SUMP
		6 GAUGE STEEL FLAT STOCK - 3' x 8 3/4"
		3' x 4.1 'C' CHANNEL FEET - 3' LONG
		3' x 4.1 'C' CHANNEL BASE - 27 1/2' LONG



SIDE VIEW



END VIEW



BOTTOM VIEW

NOTES:  
 1 STAND CONSTRUCTED FROM MILD STEEL AND PAINTED  
 BLACK W/ 2 PART EPOXY COATING

REV	A	UPDATED TITLE BLOCK	1/8/09	MG
REV		REVISION DESCRIPTION		
TITLE		AHT 150 GALLON HORIZONTAL TANK STAND DETAILS		
CORPORATION OF AMERICA		ASSMANN CORPORATION OF AMERICA		
SALES ORDER		REV DATE		
300 N TAYLOR ROAD		BRANNEN, IN 46738		
GARRETT, IN 46738		PHONE: (260) 357-3181		
FAX: (260) 357-3738		D. MYERS		
9/2/08		BRANNEN DATE		
AHS 150		DWG NUMBER		
A		REV		