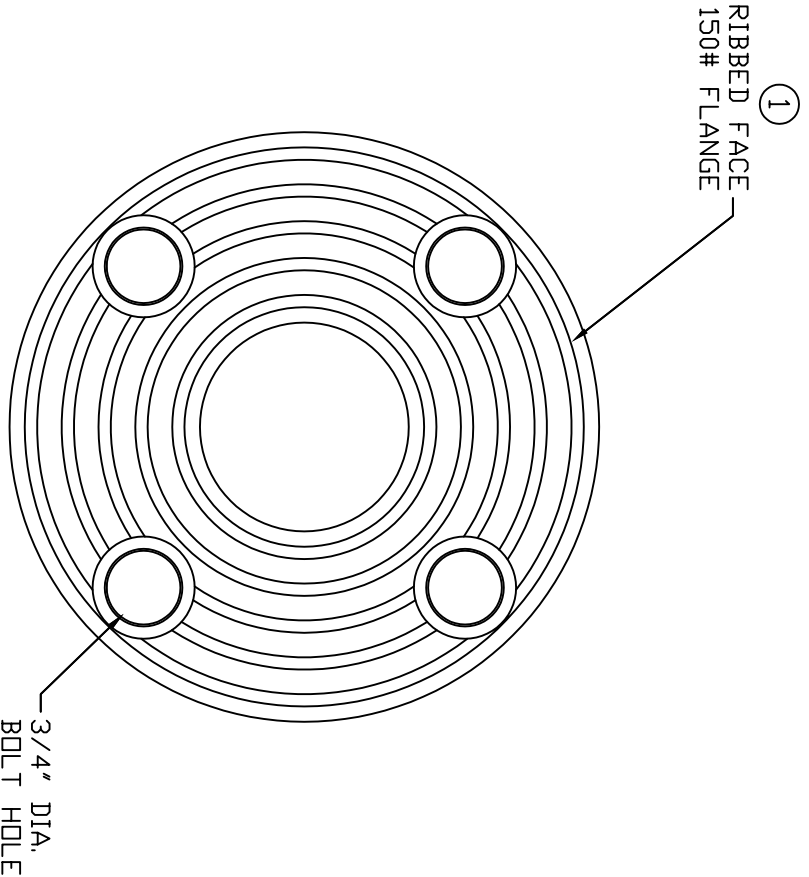
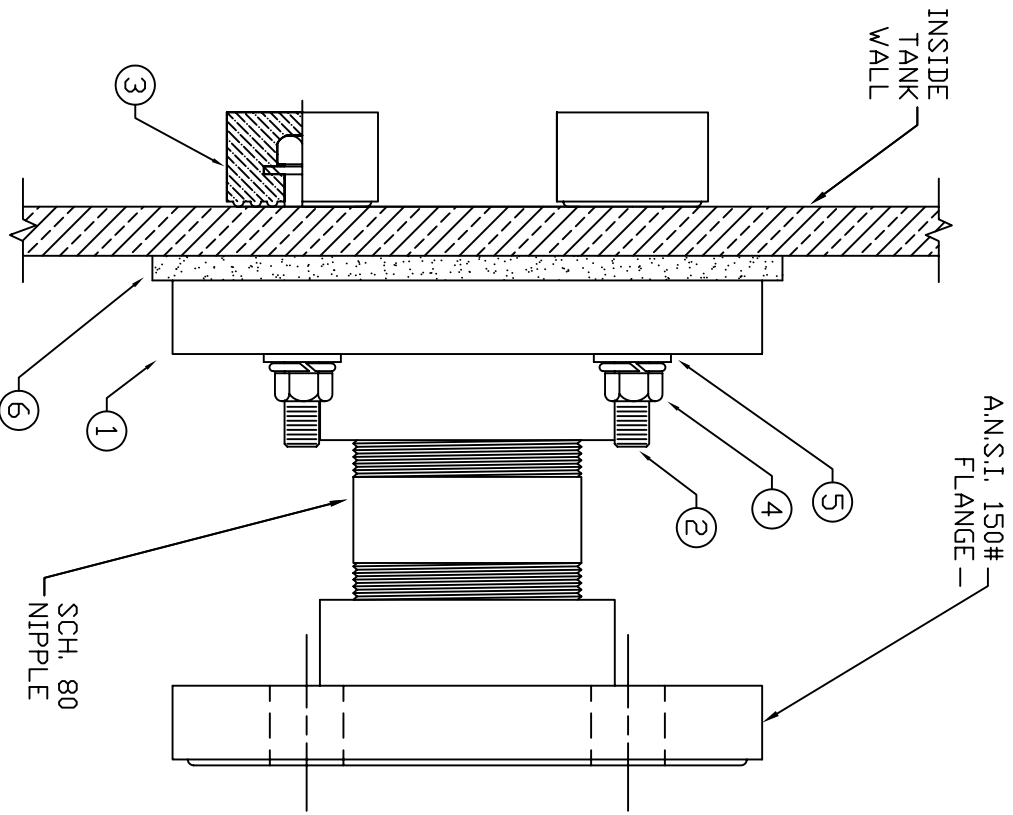



- NOTES:
1. A.N.S.I.-B 150LBS. FLANGE
  2. 1/2"-13UNC-2B X 3" HEX HD BOLT
  3. 2" Ø ENCAPSULATED BOLT HEAD
  4. 1/2"-13UNC-2B HEX NUT
  5. 1/2" WASHERS
  6. GASKET

MATERIALS:

- FLANGE, NIPPLES, & ELBOW:  
 PVC CPVC POLYPROPYLENE PVDF (OPTIONAL)  
 BOLTS, NUTS & WASHERS:  
 316 STAINLESS STEEL HASTELLOY TITANIUM  
 GASKET MATERIAL:  
 E.P.D.M. VITON XLPE BUNA GORTEX  
 MOLDDED ENCAPSULATED BOLT HEAD:  
 E.P.D.M. & VITON ONLY



REV	A	DESCRIPTION	DATE
		UPDATED TITLE BLOCK	4/20/09 MG


**Ica**  
 CORPORATION OF AMERICA  
 300 N TAYLOR ROAD  
 GARRETT, IN 46738  
 PHONE: (260) 357-3181  
 FAX: (260) 357-3738

TITLE: FLANGE FITTING WITH FLANGE ADAPTER  
 DWG NUMBER: FF-FA  
 REV: A