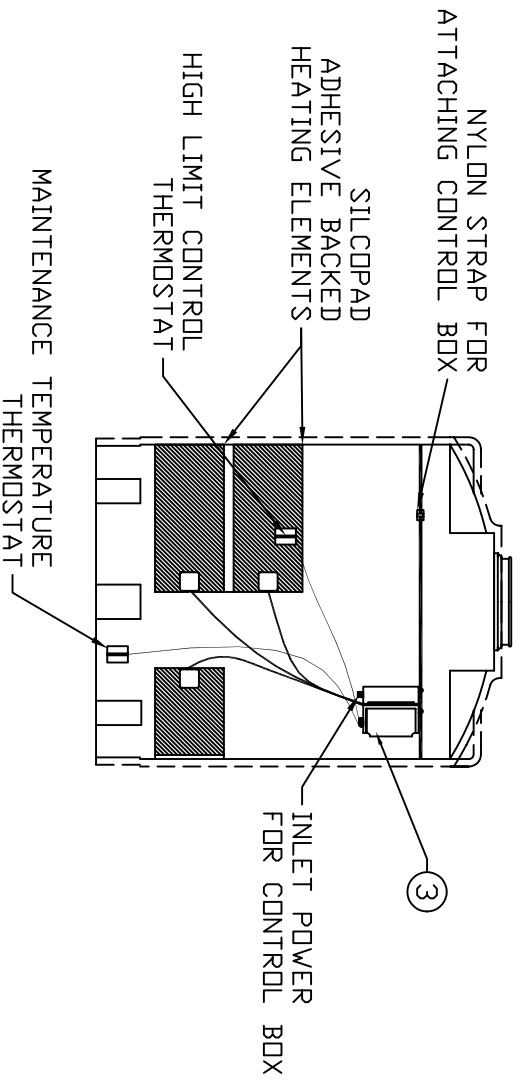
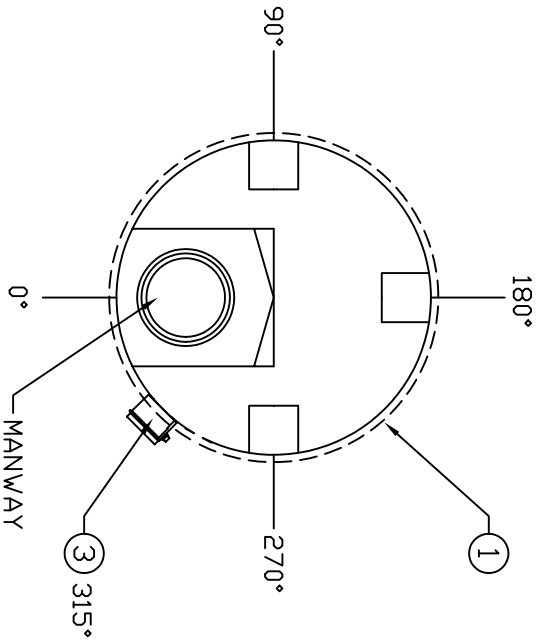


- NOTES:
 1) INSULATION USED:
 NOMINAL 2" OF URETHANE SPRAY FOAM INSULATION
 2) MASTIC USED:
 TWO COATS OF MASTIC COATING (GREY STANDARD)
 3) NEMA 4 CONTROL BOX:
 NEMA 4 BOX WITH DUAL CONTROL THERMOSTATS
 HIGH LIMIT / MAINTENANCE TEMPERATURE



| ACA MODEL # | CONTROLLER | VOLTS | 50° DELTA °T | | 80° DELTA °T | | 100° DELTA °T | |
|-------------|------------|-------|--------------|-------|--------------|-------|---------------|-------|
| | | | AMPS | WATTS | AMPS | WATTS | AMPS | WATTS |
| ICT 65 | SSPCP | 120 | 1.75 | 210 | 1.75 | 210 | 1.75 | 210 |
| ICT 80 | SSPCP | 120 | 1.75 | 210 | 1.75 | 210 | 1.75 | 210 |
| ICT 140 | SSPCP | 120 | 1.75 | 210 | 1.75 | 210 | 1.75 | 210 |
| ICT 300 | SSPCP | 120 | 1.75 | 210 | 1.75 | 210 | 1.75 | 210 |
| ACT 550 | SSPCP | 120 | 1.75 | 210 | 3.5 | 420 | 3.5 | 420 |
| ICT 550 | SSPCP | 120 | 1.75 | 210 | 3.5 | 420 | 3.5 | 420 |
| JFT 550 | SSPCP | 120 | 1.75 | 210 | 3.5 | 420 | 3.5 | 420 |
| ICT 700 | SSPCP | 120 | 1.75 | 210 | 3.5 | 420 | 3.5 | 420 |
| ICT 850 | SSPCP | 120 | 3.5 | 420 | 3.5 | 420 | 3.5 | 420 |
| JFT 950 | SSPCP | 120 | 3.5 | 420 | 3.5 | 420 | 3.5 | 420 |
| ICT 1000 | SSPCP | 120 | 3.5 | 420 | 3.5 | 420 | 3.5 | 420 |
| ICT 1100 | SSPCP | 120 | 3.5 | 420 | 3.5 | 420 | 5.25 | 630 |
| ICT 1200 | SSPCP | 120 | 3.5 | 420 | 5.25 | 630 | 5.25 | 630 |
| ACT 1500 | SSPCP | 120 | 3.5 | 420 | 5.25 | 630 | 5.25 | 630 |
| ICT 1500 | SSPCP | 120 | 3.5 | 420 | 5.25 | 630 | 5.25 | 630 |
| ICT 1850 | SSPCP | 120 | 3.5 | 420 | 5.25 | 630 | 7 | 840 |
| ICT 2000 | SSPCP | 120 | 3.5 | 420 | 5.25 | 630 | 7 | 840 |
| ICT 2050 | SSPCP | 120 | 3.5 | 420 | 7 | 840 | 7 | 840 |
| ICT 2400 | SSPCP | 120 | 3.5 | 420 | 7 | 840 | 7 | 840 |
| ICT 2500 | SSPCP | 120 | 3.5 | 420 | 7 | 840 | 7 | 840 |
| ICT 2900 | SSPCP | 120 | 5.25 | 630 | 7 | 840 | 7 | 840 |
| ICT 3000 | SSPCP | 120 | 5.25 | 630 | 7 | 840 | 7 | 840 |
| ICT 4000 | SSPCP | 120 | 5.25 | 630 | 7 | 840 | 10.5 | 1260 |
| ICT 4100 | SSPCP | 120 | 5.25 | 630 | 7 | 840 | 10.5 | 1260 |
| ICT 4200 | SSPCP | 120 | 5.25 | 630 | 10.5 | 1260 | 10.5 | 1260 |
| ICT 5200 | SSPCP | 120 | 5.25 | 630 | 10.5 | 1260 | 10.5 | 1260 |
| ICT 5500 | SSPCP | 120 | 7 | 840 | 10.5 | 1260 | 14 | 1680 |
| ICT 5600 | SSPCP | 120 | 7 | 840 | 10.5 | 1260 | 14 | 1680 |
| ICT 6500 | SSPCP | 120 | 7 | 840 | 10.5 | 1260 | 14 | 1680 |
| ICT 8000 | SSPCP | 120 | 10.5 | 1260 | 14 | 1680 | 17.5 | 2100 |
| ICT 8410 | SSPCP | 120 | 10.5 | 1260 | 14 | 1680 | 17.5 | 2100 |
| ICT 10000 | SSPCP | 120 | 10.5 | 1260 | 14 | 1680 | 17.5 | 2100 |
| ICT 12000 | SSPCP | 120 | 10.5 | 1260 | 17.5 | 2100 | 17.5 | 2100 |

| | | |
|--|----------------------|----------|
| REV | REVISION DESCRIPTION | REV DATE |
| <p>Assmann CORPORATION OF AMERICA 300 N TAYLOR ROAD GARRETT, IN 46738</p> <p>PHONE (260) 357-3181 FAX (260) 357-3738</p> | | |
| TITLE ASSMANN VERTICAL TANK HEAT TRACING & INSULATION PKG ASSMANN CORPORATION | | |
| DRAWN BY: SRD/VLJ/SDN DRAWN DATE: 11/26/03 DWG NUMBER: HTV001 REV: A | | |