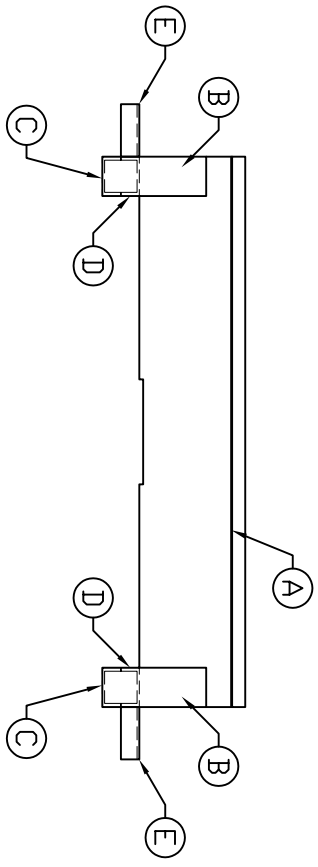
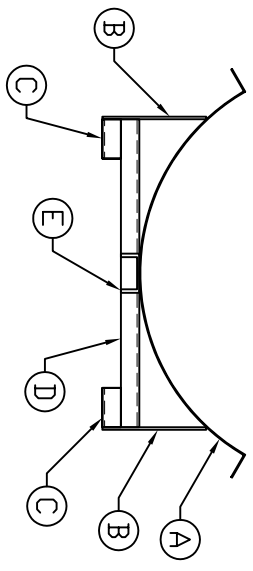


ACCESSORIES

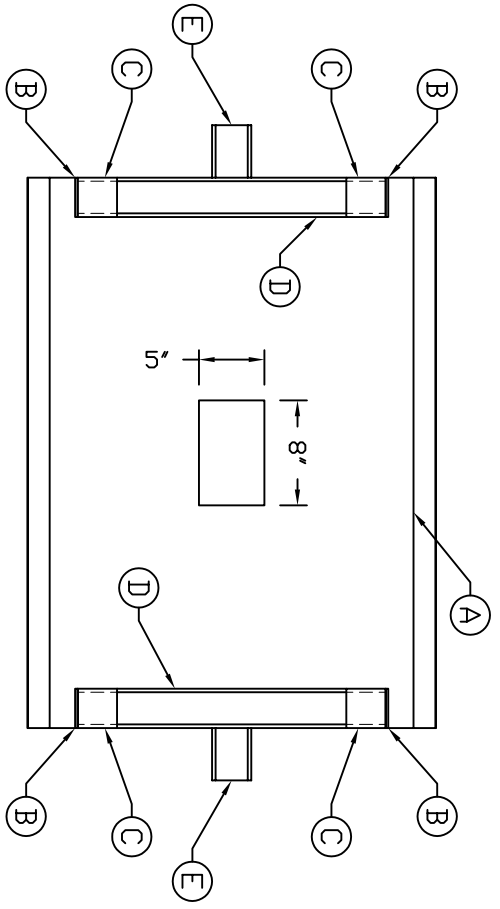
| MK | QTY | SIZE | DESCRIPTION |
|----|-----|------|---|
| A | 1 | - | 14 GAUGE STEEL ROLLED TO 32" DIA. (36"W x 42"L) - W/ 5"W x 8"L CUT OUT FOR SUMP |
| B | 4 | - | 6 GAUGE STEEL FLAT STOCK - 3" x 8" |
| C | 4 | - | 3" x 4.1" C" CHANNEL FEET - 3' LONG |
| D | 2 | - | 3" x 4.1" C" CHANNEL BASE - 23 1/2" LONG |
| E | 2 | - | 3" x 4.1" C" CHANNEL END SUPPORT - 4' LONG |



SIDE VIEW





END VIEW



BOTTOM VIEW

NOTES:
 1 STAND CONSTRUCTED FROM MILD STEEL AND PAINTED
 BLACK W/ 2 PART EPOXY COATING

| | | |
|---|----------------------|-----------|
| REV A | UPDATED TITLE BLOCK | 1/5/09 MG |
| REV | REVISION DESCRIPTION | REV DATE |
|   | | |
| TITLE: IHT 150 GALLON HORIZONTAL TANK STAND DETAILS CORPORATION OF AMERICA 300 N TAYLOR ROAD GARRETT, IN 46738 PHONE: (260) 357-3181 FAX: (260) 357-3738 | | |
| SALES ORDER | | |
| D.W.G. NUMBER: IHS 150 | | REV: A |