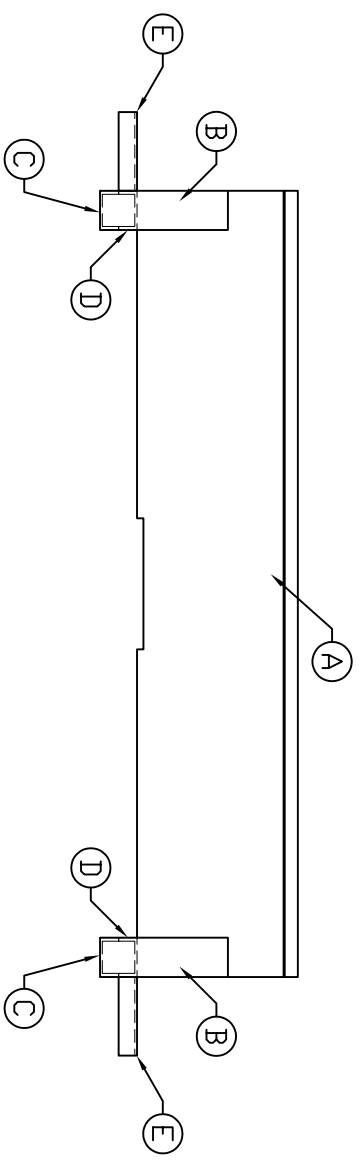
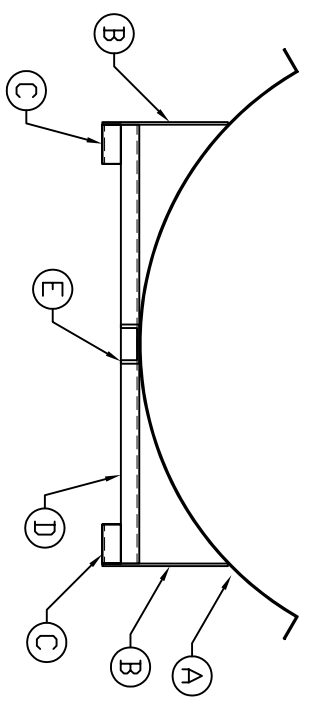


ACCESSORIES

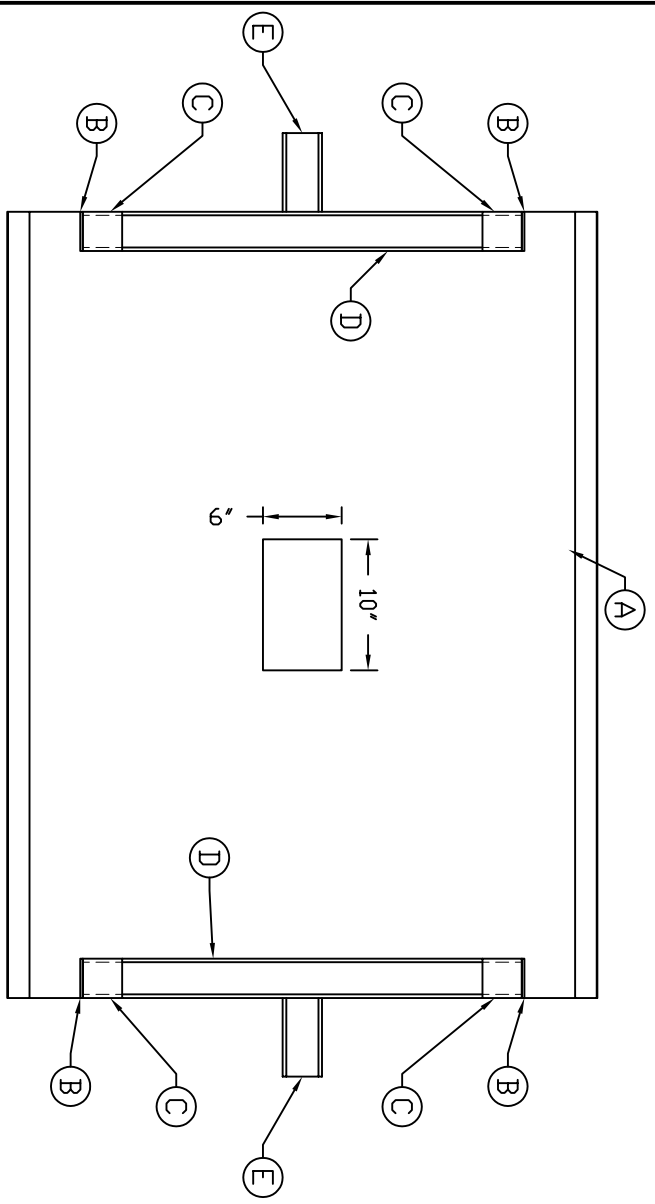
MK	QTY	SIZE	DESCRIPTION
A	1	-	14 GAUGE STEEL ROLLED TO 48" DIA. (32"W x 60"L) - W/ 6"W x 10"L CUT OUT FOR SUMP
B	4	-	6 GAUGE STEEL FLAT STOCK - 3' x 9 1/2"
C	4	-	3' x 4.1 'C' CHANNEL FEET - 3' LONG
D	2	-	3' x 4.1 'C' CHANNEL BASE - 27 1/2' LONG
E	2	-	3' x 4.1 'C' CHANNEL END SUPPORT - 6' LONG



SIDE VIEW



END VIEW



BOTTOM VIEW

NOTES:
 1 STAND CONSTRUCTED FROM MILD STEEL AND PAINTED
 BLACK W/ 2 PART EPOXY COATING

REV A	UPDATED TITLE BLOCK	1/9/09 MG
REV	REVISION DESCRIPTION	REV DATE
TITLE: IHT 500 GALLON HORIZONTAL TANK STAND DETAILS		
SALES ORDER		
300 N TAYLOR ROAD GARRETT, IN 46738 PHONE: (260) 357-3181 FAX: (260) 357-3738		
DWG NUMBER: IHS 500		
REV: A		