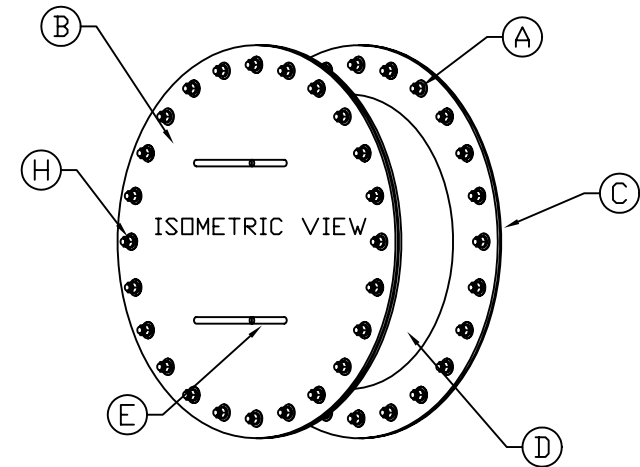


ACCESSORIES			
MK	QTY	SIZE	DESCRIPTION
A	24	-	ENCAPSULATED BOLTS COMPLETE WITH HARWARE
B	1	-	1/4" THICK X 30" DIAMETER PLATE WITH 9/16" DIAMETER HOLES DRILLED 24 PLACES (MANYWAY COVER PLATE)
C	1	-	1/4" THICK X 30" DIAMETER PLATE ROLLED TO DIAMETER OF BULK STORAGE TANK **SEE NOTES** (TANK FLANGE)
D	1	-	24" INSIDE DIAMETER STAINLESS OR CARBON STEEL PIPE
E	2	-	1/2" STAINLESS OR CARBON STEEL ROUND STOCK BENT FOR HANDLE
F	2	-	3/16" THICK GASKET (30" OD X 24" ID)
G	1	-	1/4" THICK X 30" OUTSIDE DIAMETER PLATE WITH 9/16" DIAMETER HOLES DRILLED 24 PLACES AND CENTER HOLE CUT TO MATCH 24" I.D. PIPE (OUTER FLANGE)
H	24	-	1 1/2" (316) S/S BOLTS WITH HARDWARE



NOTES:

- 1) BOTH THE TANK WALL FLANGE AND OUTER FLANGE ARE FULLY WELDED INSIDE AND OUT. (LIQUID TIGHT WELD REQUIRED)
- 2) 9/16" BOLT HOLES ARE DRILLED ON 27" CENTERLINE
- 3) ITEM ( C ) IS ROLLED TO CONFORM TO TANK DIAMETER 96", 105", 119", 143" DIAMETER ARE AVAILABLE. MINIMUM 1.9 SP.G. TANK MUST BE USED.

A	ADDED NOTE FOR DIFFERENT TANK DIAMETERS, CHANGED SIZE OF PLATES, CHANGED BOLT HOLE PATTERN, CHANGED NUMBER OF BOLTS PROVIDED	12/28/06 SR
REV	REVISION DESCRIPTION	REV DATE
		300 N TAYLOR ROAD GARRETT, IN 46738 PHONE: (260) 357-3181 FAX: (260) 357-3738
TITLE 24" 304 S/S OR CARBON STEEL SIDE MANWAY FOR VERTICAL TANKS		DRAWN BY: S ROWLISON DRAWN DATE: 6/19/06 DWG NUMBER: SI-MNW-24 REV: A