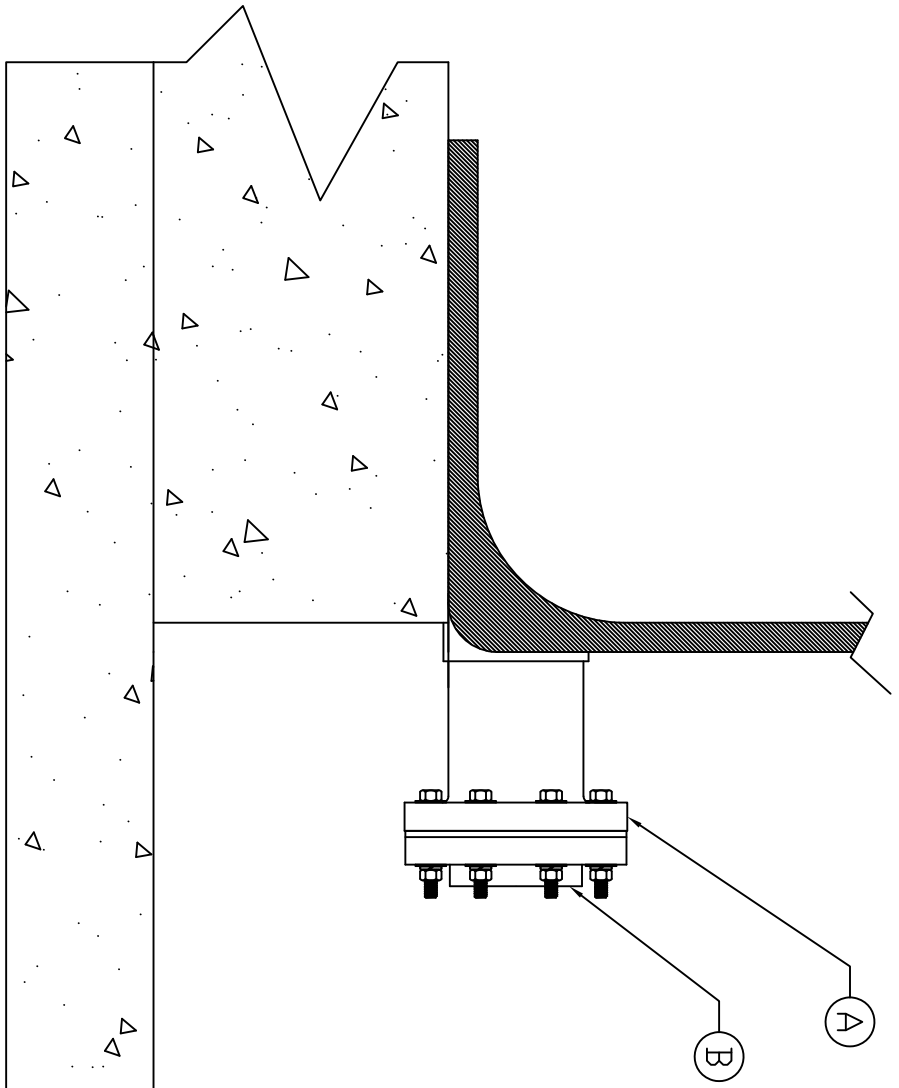


- NOTES:
- 1) ASSEMBLY IS AVAILABLE IN 3' OR 4' SIZE.
 - 2) GASKET MATERIAL AVAILABLE: EPDM, BUNA, VITON, XLPE.
 - 3) FITTING MATERIAL AVAILABLE: PVC, CPVC, POLYPRD.
 - 4) HARDWARE MATERIAL AVAILABLE: S/S, TITANIUM, HASTELLOY.
 - 5) TO CALCULATE TANK PAD DIAMETER ON MODELS NOT LISTED USE TANK DIAMETER PLUS 3% ROUNDED UP TO NEAREST NUMBER.
 - 6) ASSMANN RECOMMENDS THAT AT LEAST SIX (6) LAYERS OF ROOF FELT BE PLACED BETWEEN THE TANK AND ITS INTENDED FOUNDATION.



ACCESSORIES

MK	QTY	SIZE	DESCRIPTION
A	1	3-4	XLPE FULL DRAIN FLANGE ADAPTER
B	1	3-4	FLANGE WITH GASKET AND HARDWARE

MINIMUM CONCRETE PAD DIAMETER RECOMMENDED			
TANK DIAMETER	PAD DIAMETER	PAD WITH RESTRAINT	
86'	89'	117'	
96'	99'	127'	
105'	109'	137'	
119'	123'	151'	
143'	148'	176'	

MINIMUM CONCRETE PAD NOTCH WIDTH RECOMMENDED					
TANK DIAMETER	86'	96'	105'	119'	143'
NOTCH WIDTH 3' FDD	10 1/2"	10 1/2"	10 1/2"	10 1/2"	10 1/2"
NOTCH WIDTH 4' FDD	12"	12"	12"	12"	12"

MINIMUM CONCRETE PAD HEIGHT RECOMMENDED					
TANK DIAMETER	86'	96'	105'	119'	143'
PAD HEIGHT 3' FDD	7"	7"	7"	7"	7"
PAD HEIGHT 4' FDD	8"	8"	8"	8"	8"

NOTE: IN ORDER TO MAINTAIN FACTORY WARRANTY FLEXIBLE EXPANSION JOINT AND PROPER SUPPORT IS REQUIRED DIRECTLY AFTER ISOLATION VALVE. SUPPORT MUST BE INSTALLED AFTER EXPANSION JOINT.

B	CORRECTED VIEW ON CONCRETE	3/1/17	SR
A	ADDED PAD DIMENSIONS, ADDED FLANGE CONNECTION	10/18/12	
REV	REVISION DESCRIPTION		REV DATE

SALES ORDER

Assmann
CORPORATION OF AMERICA

300 N TAYLOR ROAD
GARRETT, IN 46738
PHONE: (660) 357-3181
FAX: (660) 357-3798

BRANN JH
SRDVLISDN
BRANN DATE
4/22/09

DWG NUMBER: FDD
REV: B

TITLE: POLYETHYLENE FULL DRAIN OUTLET