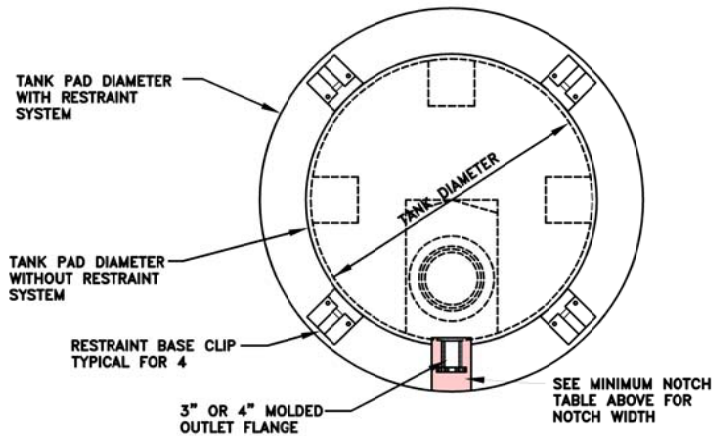


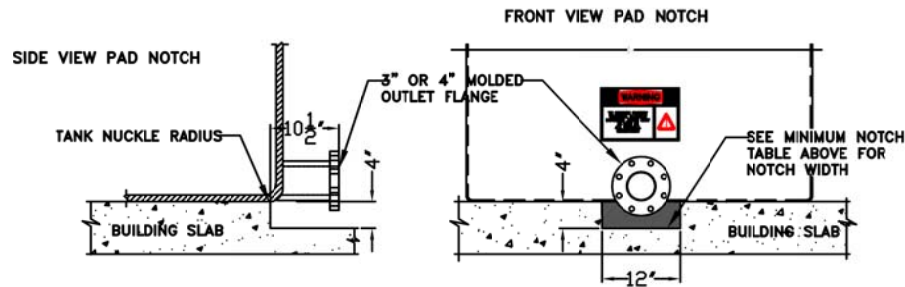
MINIMUM PAD DIAMETER RECOMMENDED		
TANK DIAMETER	PAD DIAMETER	PAD WITH RESTRAINT
86"	89"	117"
96"	99"	127"
105"	109"	137"
119"	123"	151"
143"	148"	176"

MINIMUM PAD HEIGHT RECOMMENDED					
TANK DIAMETER	86"	96"	105"	119"	143"
PAD HEIGHT 3" FDO	7"	7"	7"	7"	7"
PAD HEIGHT 4" FDO	8"	8"	8"	8"	8"

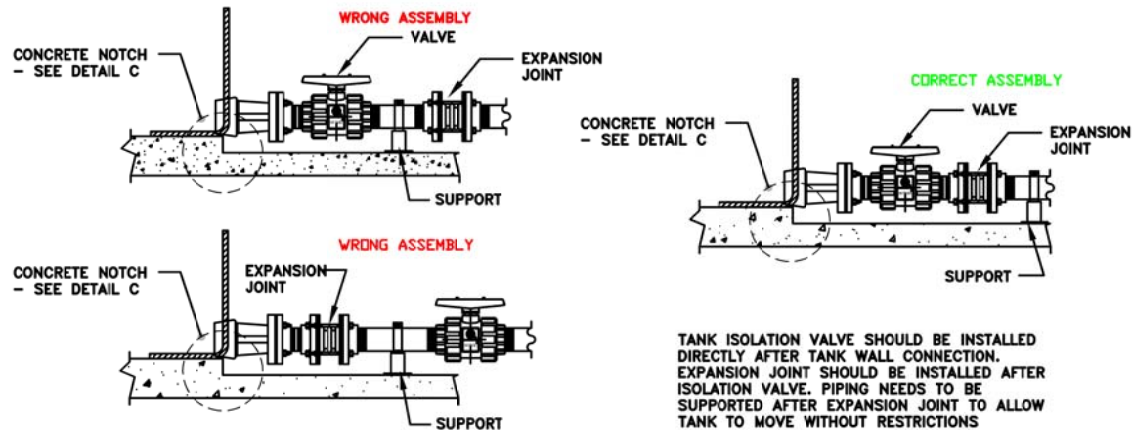
MINIMUM NOTCH WIDTH RECOMMENDED					
TANK DIAMETER	86"	96"	105"	119"	143"
NOTCH WIDTH 3" FDO	10 1/2"	10 1/2"	10 1/2"	10 1/2"	10 1/2"
NOTCH WIDTH 4" FDO	12"	12"	12"	12"	12"



A DETAIL- TYPICAL TANK PAD LAYOUT



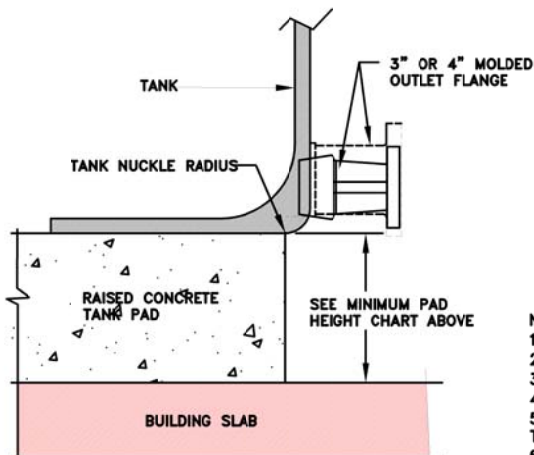
C DETAIL- NOTCHED CONCRETE TANK PAD



D DETAIL- EXPANSION JOINT CONFIGURATION

- NOTES:
- 1) ASSEMBLY IS AVAILABLE IN 3" OR 4" SIZE.
 - 2) GASKET MATERIAL AVAILABLE: EPDM, BUNA, VITON, XLPE.
 - 3) FITTING MATERIAL AVAILABLE: PVC, CPVC, POLYPRO.
 - 4) HARDWARE MATERIAL AVAILABLE: S/S, TITANIUM, HASTELLOY.
 - 5) TO CALCULATE TANK PAD DIAMETER ON MODELS NOT LISTED USE TANK DIAMETER PLUS 3% ROUNDED UP TO NEAREST NUMBER.
 - 6) ASSMANN RECOMMENDS THAT AT LEAST SIX (6) LAYERS OF ROOF FELT BE PLACED BETWEEN THE TANK AND ITS INTENDED FOUNDATION.

NOTE: IN ORDER TO MAINTAIN FACTORY WARRANTY FLEXIBLE EXPANSION JOINT AND PROPER SUPPORT IS REQUIRED DIRECTLY AFTER ISOLATION VALVE. SUPPORT MUST BE INSTALLED AFTER EXPANSION JOINT.



B DETAIL- RAISED CONCRETE TANK PAD

REV	REVISION DESCRIPTION	REV DATE

	300 N TAYLOR ROAD GARRETT, IN 46738 PHONE: (260) 357-3181 FAX: (260) 357-3738	SALES ORDER DRAWN BY: J. LIKENS DRAWN DATE: 02/21/19
	TITLE FDO CONCRETE PAD, PAD NOTCHING AND EXPANSION JOINT DETAILS ASSMANN CORPORATION	