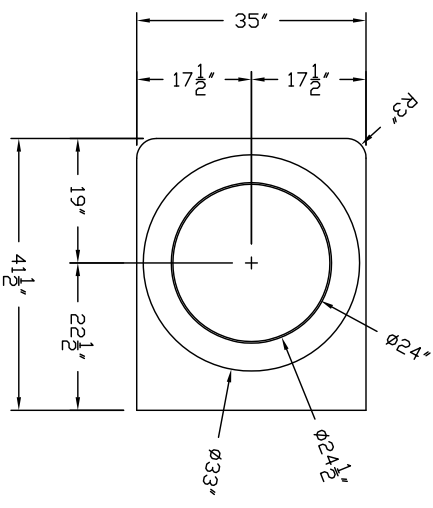
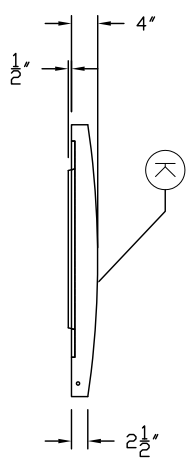
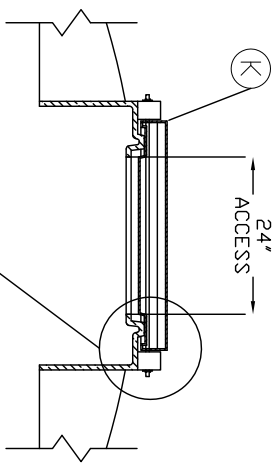
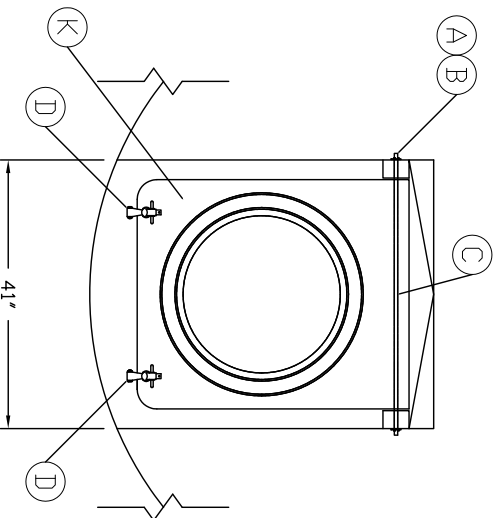
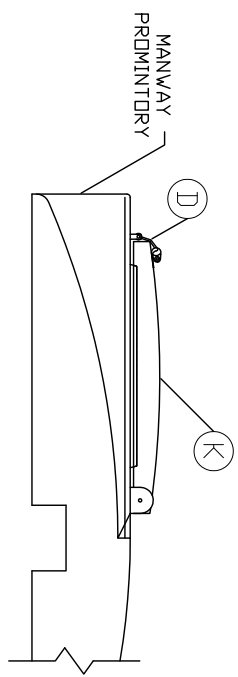


ACCESSORIES


MK	QTY	SIZE	DESCRIPTION
A	2	1/2	316 S/S FLAT WASHER
B	2	-	S/S COTTER PIN
C	1	1/2	1/2" DIAMETER POLYETHYLENE ROD, 43" LENGTH
D	2	-	BUNGY STRAPS - TO BE REMOVED
E	2	1/4	S/S 1/4" X 1 1/2" LONG THREADED BOLT
F	2	1/4	S/S 1/4" HEX NUT
G	2	1/4	S/S 1/4" LOCK WASHER
H	4	1/4	S/S 1/4" FLAT WASHER
K	1	24"	PRESSURE RELIEF MANWAY W/ 1SLB FOAM FILLER



- NOTES:
- 1 LOCATE FITTINGS FROM PLAN VIEW.
  - 2 TANK(S) MUST BE INSTALLED PER ASSMANN CORPORATION USAGE & GUIDELINES.
  - 3 FLEXIBLE EXPANSION JOINTS MUST BE USED ON ALL SIDEWALL CONNECTIONS.
  - 4 TANKS ARE BUILT PER ASTM D 1998.



REV	REVISION DESCRIPTION	REV DATE


**ASSMANN CORPORATION OF AMERICA**  
 300 N TAYLOR ROAD  
 GARRETT, IN 46738  
 PHONE: (260) 357-3181  
 FAX: (260) 357-3738  
 DRAMA INT. MCDHBS  
 8/13/2013  
 DWG NUMBER: **HM24**  
 REV: -  
 TITLE: **24" HINGED & WEIGHTED PRESSURE RELIEF MANWAY**  
 ASSMANN CORPORATION OF AMERICA