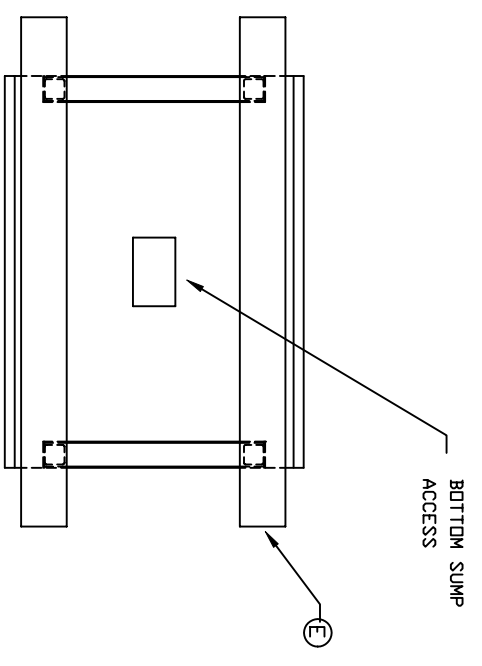
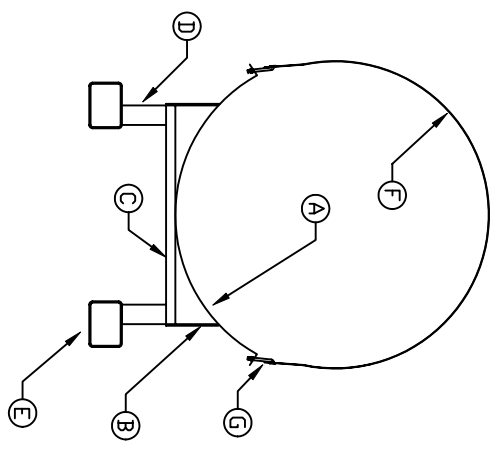
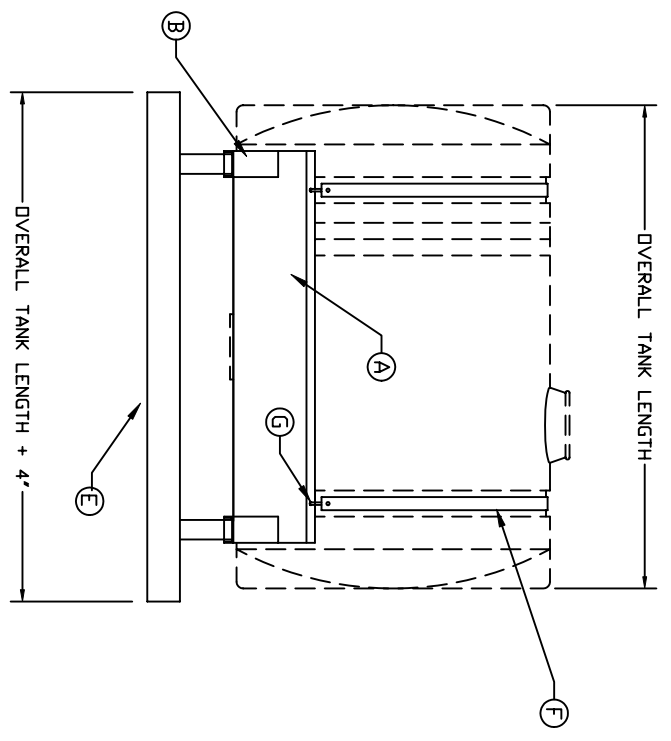


STAND MATERIAL LIST

PK	QTY	DESCRIPTION
A	1	PAN: TO BE FORMED FROM 1200 SHEET STEEL & ROLLED TO TANK DIA. WITH (2ea) 2" 90° BENDS EACH SIDE
B	4	SIDE BRACES: 4" X 3/16" FLAT STOCK
C	2	SADDLE SUPPORTS: 4" X 5/4" # 4C CHANNEL
D	4	LEGS: 3" X 3" X 3/16" - 8' LONG BOX TUBING
E	2	FORKLIFT RAILS: 5" X 7" X 3/16" BOX TUBE
F	2	TIE DOWN BANDS: 2" WIDE 316 STAINLESS STEEL BANDING MATERIAL WITH (2ea) 1/2" HOLES 1' IN FROM EACH END
G	4	3/8" X 5" "J" BOLT



REVISED
 NONE
 DATE 6/14/93

Assmann
 CORPORATION OF AMERICA

REV NO
 IHF-S100