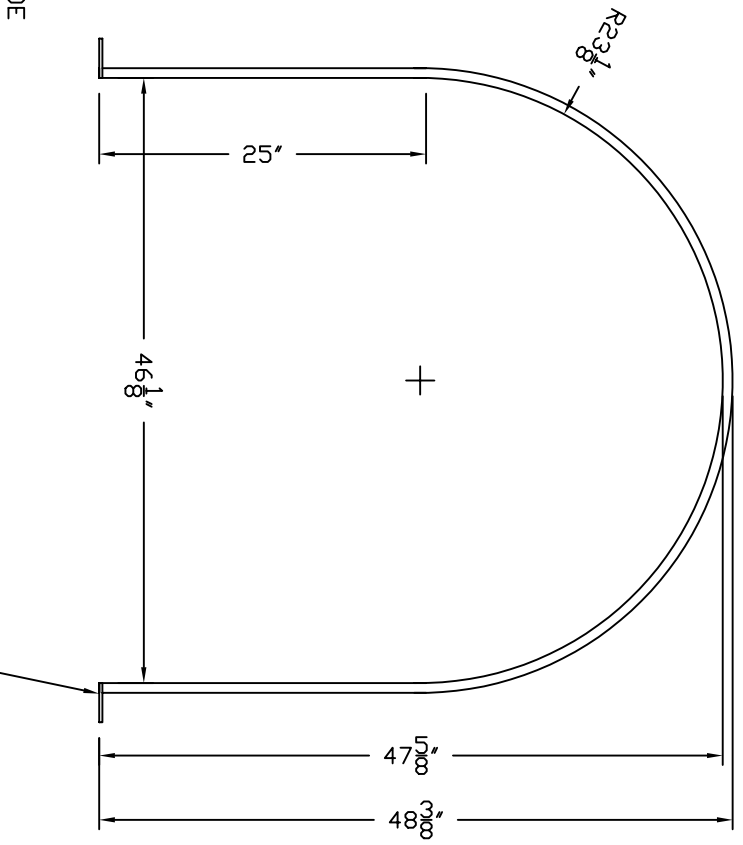
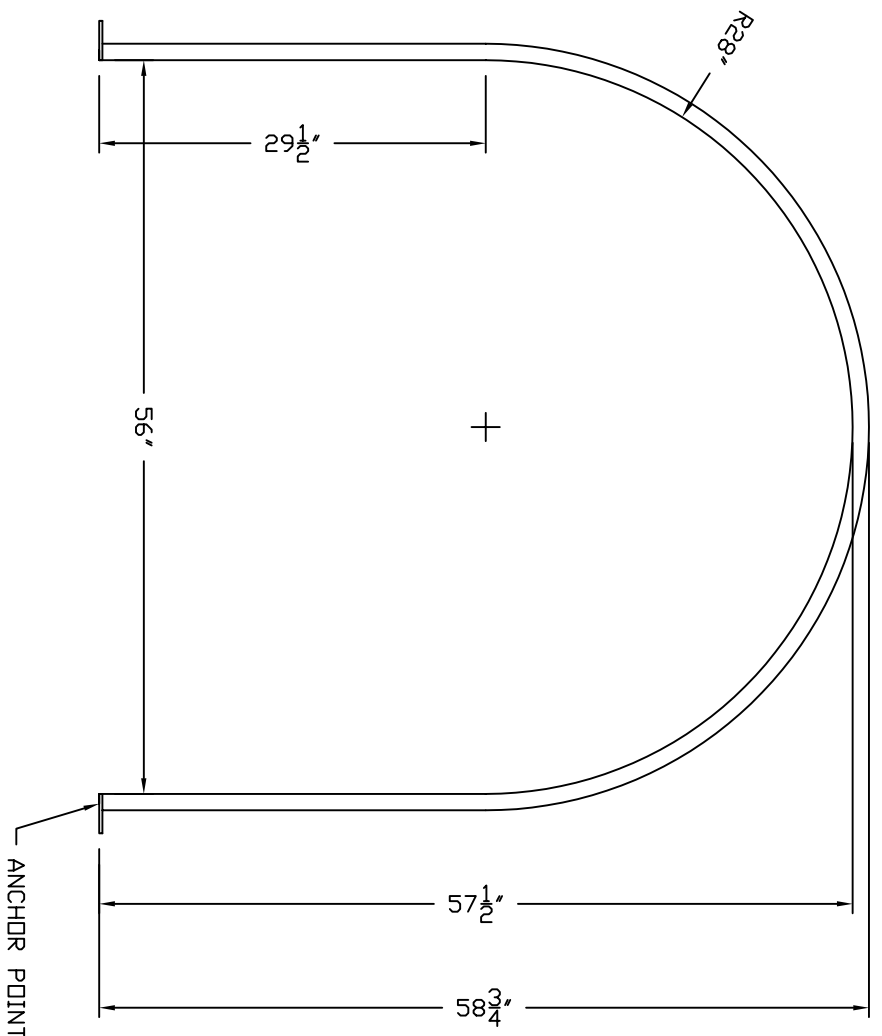
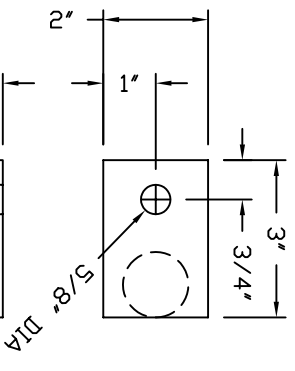


IHT 1650 HOOPS FORMED FROM 1" I.D. PIPE X 1  
1/2" O.D.  
MILD STEEL EPOXY COATED



IHT 1000 HOOPS FORMED FROM 3/4" I.D. PIPE  
MILD STEEL EPOXY COATED



ANCHOR POINT DETAIL

HOOPS SHOWN ON THIS DRAWING ARE FOR  
ANCHORING TANK TO CONCRETE PAD.  
STANDARD HOOPS HAVE THREADED ROD ENDS  
FOR ANCHORING TANK TO STAND

SPECIFY HOOP TYPE WHEN ORDERING:  
IHT\_HPS\_AP = IHT HOOP WITH CONCRETE ANCHOR POINT  
IHT\_HPS\_STD = IHT HOOP WITH STANDARD THREADED ROD ENDS

ACCESSORIES	
MK	DESCRIPTION
QTY	SIZE

REV	REVISION DESCRIPTION	REV DATE

SALES ORDER

**Tom Lorman**  
CORPORATION OF AMERICA  
300 N TAYLOR ROAD  
GARRETT, IN 46726  
PHONE: (260) 357-3181  
FAX: (260) 357-3738

DRAWN BY: S RYAN  
DATE: 10/30/08

DWG NUMBER: IHT\_HPS\_AP