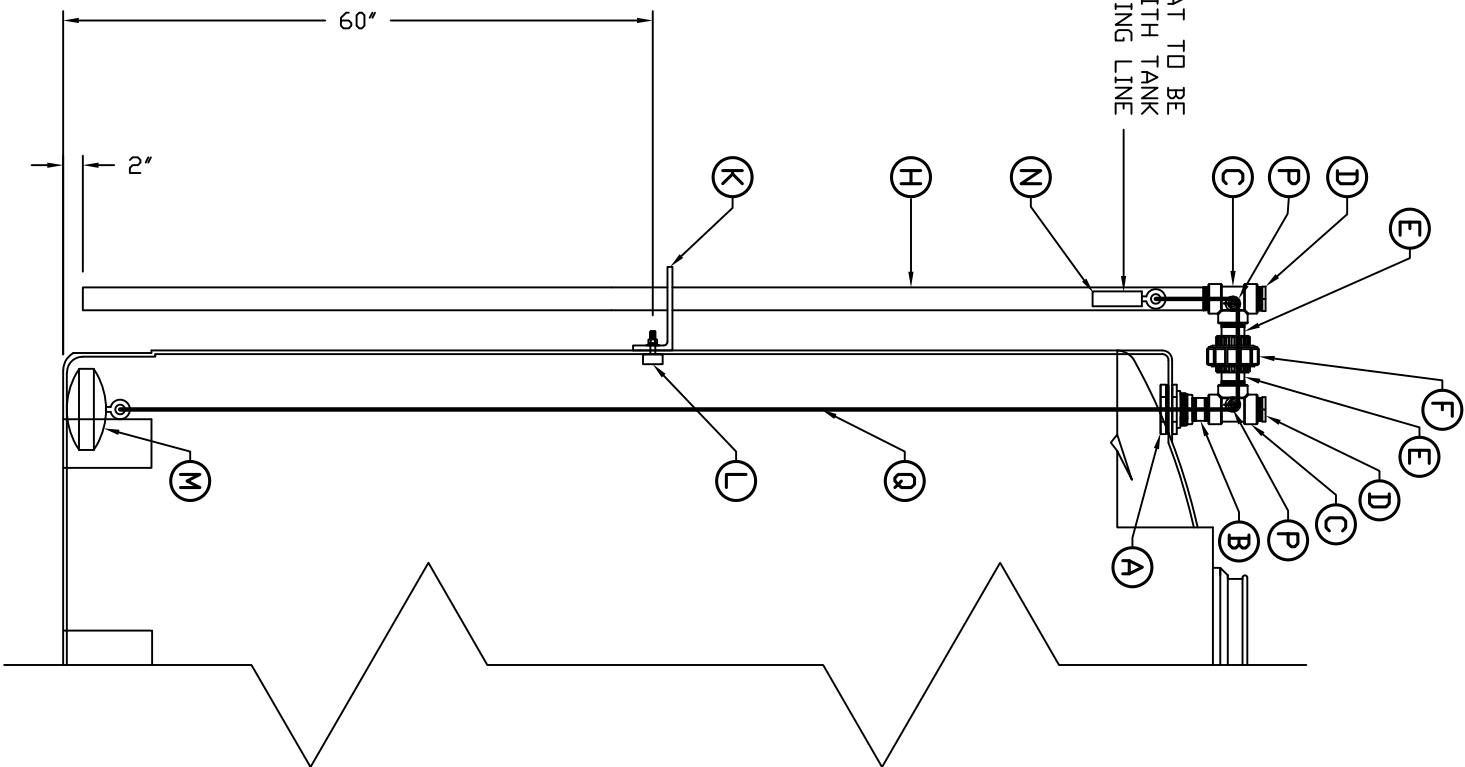


CENTER OF FLODAT TO BE  
LINED UP WITH TANK  
PARTING LINE



ACCESSORIES

MK	QTY	SIZE	DESCRIPTION
A	1	2"	PVC BULKHEAD FITTING WITH GASKET
B	1	2"	PVC THREADED CLOSE NIPPLE
C	2	2"	PVC THREADED TEE
D	2	2"	PVC THREADED PIPE PLUG
E	2	2"	PVC THREADED PIPE NIPPLE (AS REQUIRED)
F	1	2"	PVC SOCKET UNION
H	1	2"	CLEAR BUSADA 200 PIPE, THREADED ONE END
K	2	-	POLYETHYLENE PIPE SUPPORT BRACKET (SEE RFL_ASM DWG)
L	2	-	ENCAPSULATED DONKER BOLTS
M	1	-	POLYETHYLENE INTERIOR FLOAT (SEE RFL_ASM DWG.)
N	1	-	PVC EXTERIOR COUNTER WEIGHT (SEE RFL_ASM DWG.)
P	2	-	FABRICATED PVC ROLLER / INSTALLED W/ PE ROD
Q	-	-	1/8" DIA. UHMWPE ROPE

REV	REVISION DESCRIPTION	REV DATE
B	CHANGED ROPE MATERIAL FROM POLYPRD TO UHMWPE	6/5/17SR
A	CHANGED TUBING FROM PVC TO BUSADA (EFFECTIVE 5-29-08), DELETED ITEM (G) MALE THRED X COUPLER) AT TOP, DELETED ITEM (J) (FEMALE COUPLER) JOINT CONNECTION	3/24/09 SR

**Loann**  
CORPORATION OF AMERICA

300 N TAYLOR ROAD  
GARRETT, IN 46738  
PHONE: (260) 357-3181  
FAX: (260) 357-3738

BRANN, JR.  
S. R. WILLIAMS  
DRAWN DATE:  
3-2-04

TITLE: REVERSE FLODAT LEVEL INDICATOR  
FOR VERTICAL STORAGE TANKS

DWG NUMBER: RFL-3-31-04  
REV: B