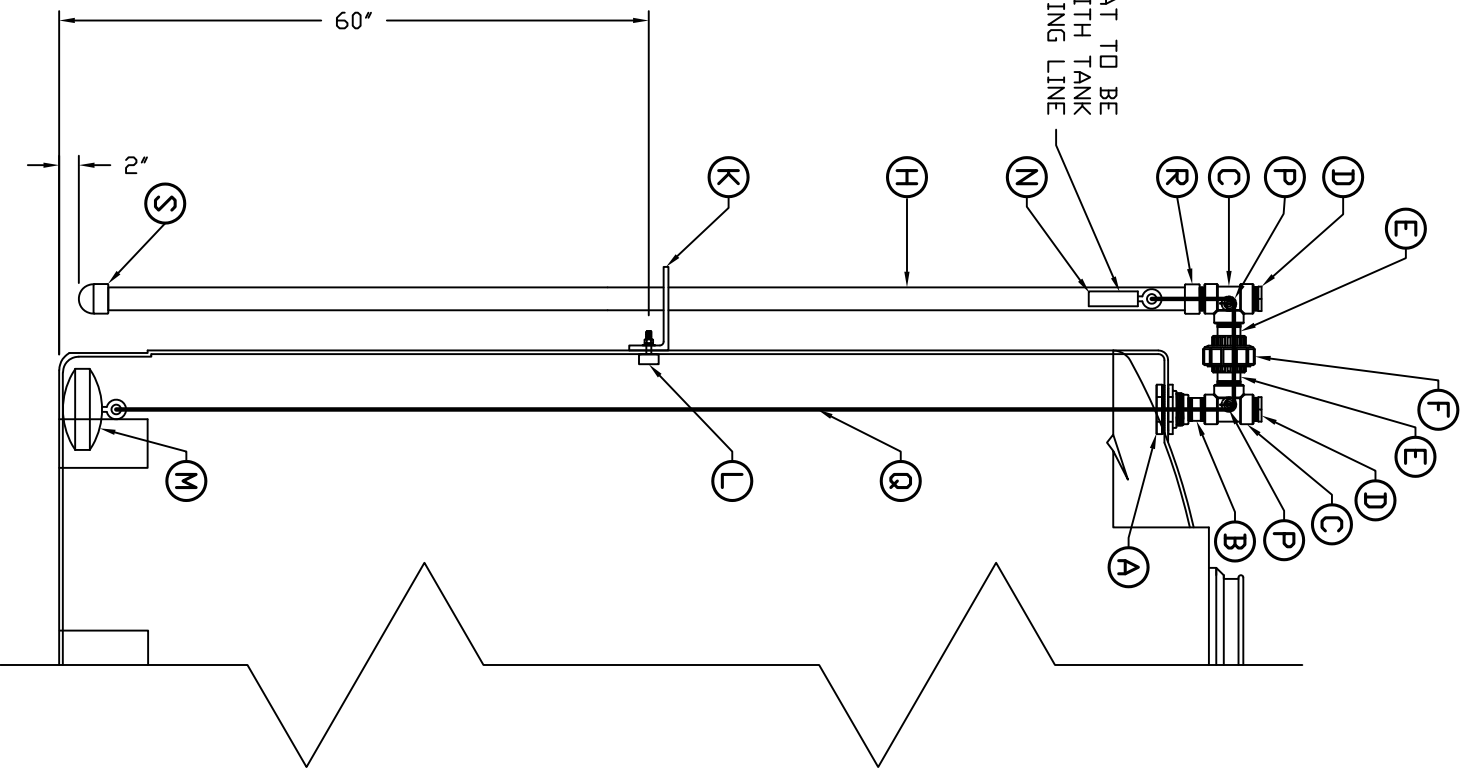


CENTER OF FLODAT TO BE
LINED UP WITH TANK
PARTING LINE



ACCESSORIES		
MK	QTY	SIZE DESCRIPTION
A	1	2" PVC BULKHEAD FITTING WITH GASKET
B	1	2" PVC THREADED CLOSE NIPPLE
C	2	2" PVC THREADED TEE
D	2	2" PVC THREADED PIPE PLUG
E	2	2" PVC THREADED PIPE NIPPLE (AS REQUIRED)
F	1	2" PVC SOCKET UNION
H	1	2" CLEAR PVC SCH 40 PIPE
K	2	POLYETHYLENE PIPE SUPPORT BRACKET (SEE RFL_ASM DWG.)
L	2	ENCAPSULATED DONKER BOLTS
M	1	POLYETHYLENE INTERIOR FLODAT (SEE RFL_ASM DWG.)
N	1	PVC EXTERIOR COUNTER WEIGHT (SEE RFL_ASM DWG.)
P	2	FABRICATED PVC ROLLER / WITH WELDED PVC ROD 1/8" DIA. UHMWPE ROPE
Q	-	-
R	1	PVC SCH 40 MALE THREAD X SOCKET ADAPTER
S	1	PVC SCH 40 SOCKET CAP

NOTE:
1) REVERSE CALIBRATED CAPACITY STICKERS
ARE AVAILABLE FOR MOST ASSMANN TANK
MODELS THESE STICKERS MUST BE ORDERED
SEPARATELY FROM THE REVERSE FLODAT
LEVEL INDICATOR.

REV	REVISION DESCRIPTION	REV DATE
300 N TAYLOR ROAD GARRETT IN 46738 PHONE: (260) 357-3181 FAX: (260) 357-3738		
TITLE FUME TIGHT REVERSE LEVEL INDICATOR / VERT. STORAGE TANKS		
DWG NUMBER: RFL-FT		REV