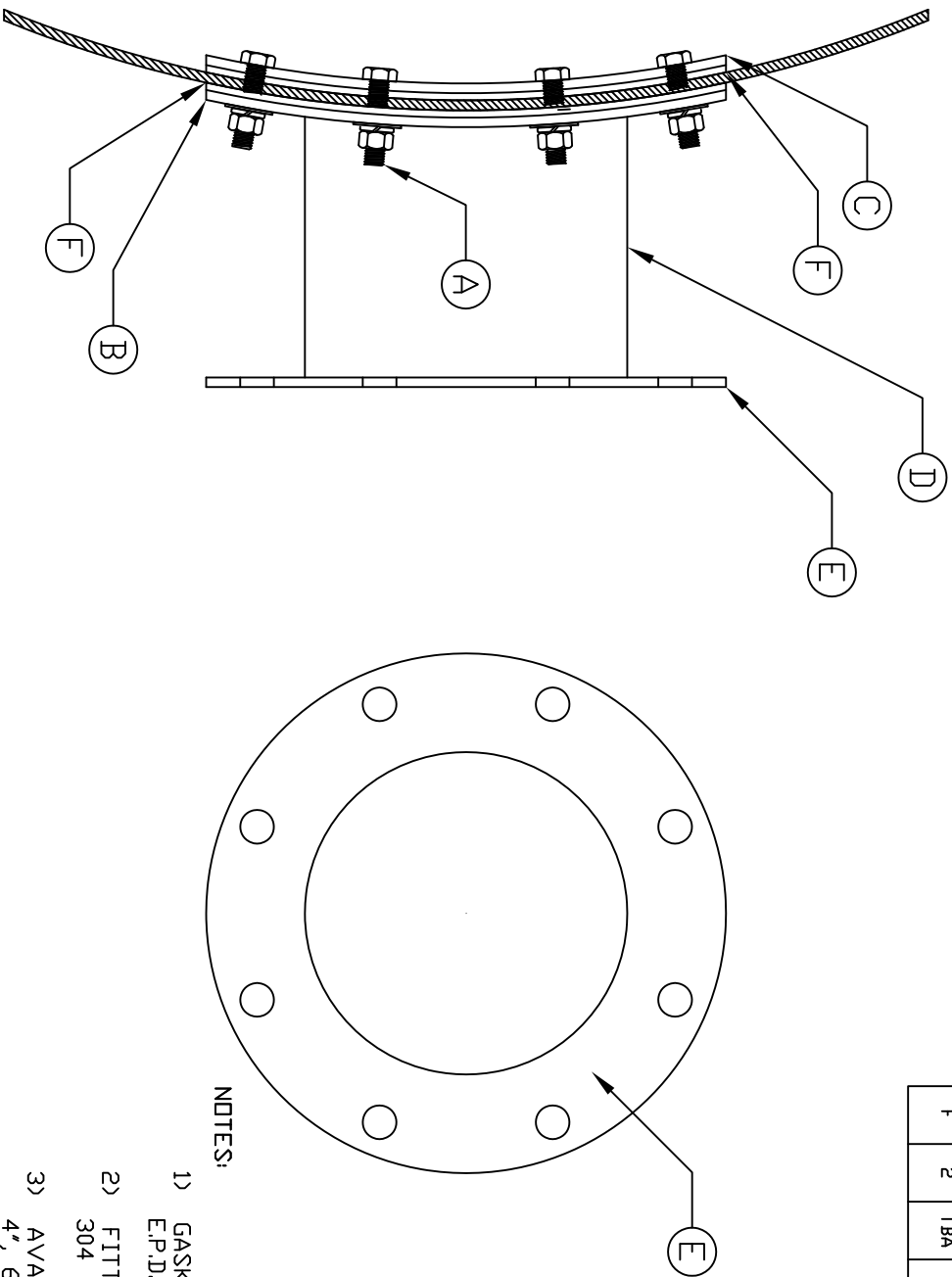


ROLLED METALLIC FITTINGS HAVE A ROLLED FACE THAT CONFORMS TO THE TANK DIAMETER. THIS GIVES A POSITIVE SEALING SURFACE TO THE TANK WALL. ALL ROLLED METALLIC FITTINGS HAVE A SHORT PIPE NIPPLE AND FLANGE FACE TO ALLOW CUSTOMER PIPING TO BE ATTACHED.



NOTES:

- 1) GASKET MATERIAL:
E.P.D.M. & VITON
- 2) FITTING MATERIAL:
304 STAINLESS STEEL & CARBON STEEL
- 3) AVAILABLE SIZES:
4", 6", 8", 10" & 12"

ACCESSORIES		DESCRIPTION
MK	QTY	SIZE
A	8	1/2" x 13 ALL THREAD BOLTS WITH HARDWARE
B	1	1/4" THICK ROLLED PLATE CONFORMS TO TANK OUTSIDE DIAMETER
C	1	1/4" THICK ROLLED PLATE CONFORMS TO TANK INSIDE DIAMETER
D	1	TBA PIPE STUB WELDED TO EXTERIOR TANK PLATE AND FLANGE ADAPTER PLATE
E	1	TBA 1/2" THICK PLATE WITH 6" DIAMETER HOLES ON A ANSI FLANGE PATTERN
F	2	TBA GASKET

REV	REVISION DESCRIPTION	REV DATE

SALES ORDER	REV DATE

300 N TAYLOR ROAD
GARRETT, IN 46738
PHONE: (260) 357-3181
FAX: (260) 357-3798

Loannu
CORPORATION OF AMERICA

TITLE: STEEL - ROLLED FLANGED FITTING

BRANN BN
MCDHBS
9/2/2014
DWG NUMBER: ROLLED FLGD. FTG.
REV