

A photograph of an industrial facility, likely a chemical processing plant, showing large metal drums and machinery. The scene is dimly lit with overhead industrial lights. A red horizontal line is drawn across the middle of the image, separating the header text from the main title.

CHEMICAL STORAGE RECOMMENDATIONS
FROM ASSMANN CORPORATION OF AMERICA

LEACHATE + CONDENSATE

Leachate is the liquid from the percolation of water through waste materials. It does not have a specific chemical formula, as Leachate's composition relies on the waste it originates from. Condensate refers to the moisture from waste materials, typically found in landfills or waste storage facilities. It is primarily composed of water vapor and may contain various Volatile Organic Compounds (VOCs).

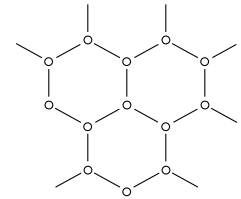
Leachate and Condensate are considered waste byproducts, and are not typically used in industrial applications. However, due to their potentially harmful environmental impact, they require proper storage and management. Safe storage, handling, and treatment practices are essential to mitigate their potential impact on soil and water resources.

ASSMANN POLYETHYLENE TANKS ARE NSF CERTIFIED

Assmann Corporation is the only manufacturer that has NSF certification for our Crosslink polyethylene in chemical storage applications. Other storage tank manufacturers do not carry the NSF certification on Crosslink polyethylene without the use of expensive liners, or they simply have potable water certification and do not have chemical certification. While selecting your storage tank, consider if NSF certification is required.



Certified to
NSF/ANSI 61



Assmann recommends that tanks be constructed of Linear or Crosslink Polyethylene, either singular or double walled. Assmann requires that tanks be rated for a minimum of 1.5 Specific Gravity. All connections below liquid level must prevent chemicals from contacting the tank wall cross section.

Assmann's Crosslink polyethylene has a much higher softening point than conventional linear polyethylene. Crosslink also has a much higher impact resistance.

LEACHATE + CONDENSATE

Specific Gravity	Resin	Fitting Material	Gasket Material	Hardware
1.5	Crosslink	PVC	EPDM	316L SS



CROSSLINK POLYETHYLENE DOUBLE WALL TANKS

Double wall plastic tanks provide the best protection against spills, making it the safest option for Leachate & Condensate.

The inner tank dome overlaps the outer tank sidewall to help prevent rainwater, snow, and debris from entering the containment basin, making them among our most safe tanks. Molded-in upper and lower fitting flats are standard. We can customize these tanks with either a top suction or sturdy designed bottom outlet. All double wall containment tanks are designed with wall thicknesses equal to or greater than that required by ASTM D-1998 standards.

HEAT TRACING & INSULATION

Heat tracing systems have adhesive backed heat tracing elements embedded in multiple layer epoxy-glass composite that are wrapped around the tank and covered with a two-inch thick layer of polyurethane foam insulation covered with two coats of mastic. Heater pads are water resistant with a gentle heat output that will not harm a plastic tank or its contents.





MANWAYS

Assmann offers manway covers specifically designed to help minimize toxic fumes. Our bolted and gasketed manway covers are available in 16", 22", and 24" sizes depending on tank model. These covers include chemical resistant bolts that compress an XLPE foam gasket between the tank wall and a rigid cover. These manways should be used on any application where fumes need to be restricted from leaving the storage tank.

FITTINGS

Our experts recommend the following fitting materials of construction: PVC or Stainless Steel for nozzles, EPDM material for Gaskets, and 316 Stainless Steel for metallic fittings and hardware. All connections below liquid level must prevent chemicals from contacting the tank wall cross section. Bulkhead-style connections can be used on tanks 2,000 gallons and below. The sidewall connections of tanks above 2,000 gallons should be 316 Stainless Steel construction. Flange style fittings are not recommended for Leachate & Condensate. There are no restrictions on dome fittings.



JOINTS

Flexible hoses or expansion joints must be used on all lower ½ sidewall connections. A lightweight isolation valve is permitted prior to the flexible joint. All piping must be supported independently of the tank. Pipe supports must be installed after the flexible joint to allow the tank to expand and contract under normal service conditions. Polyethylene tanks expand and contract both laterally and vertically; expansion hose or joint must accommodate this expansion.



SECONDARY CONTAINMENT

Proper design of storage solutions should include adequate containment in case of tank failure. Containment should be adequate in capacity and suitable for Leachate & Condensate. Typically, containment basins are sized to a minimum of 110% of the primary tank's capacity. Assmann offers both secondary containment basins and double walled tanks to meet containment requirements. Customers are responsible for checking local regulations to meet secondary containment requirements, as well as ensuring that all coatings and linings are compatible.

Quality: First and Forever

Assmann polyethylene bulk storage tanks are built the right way – even if that's not the easiest or fastest way. We're the only manufacturer who uses non-shielded molds with low temperature heat and gradual air cooling. The result is truly uniform wall thickness, unparalleled certified quality, and reliability that proves itself every time and across decades.

Assmann Corporation of America

Phone: 888-357-3181
260-357-3181

Fax: 260-357-3738

E-mail: info@assmann-usa.com

Web: assmann-usa.com



Certificate Number:
DAS 90024930/39/Q Rev: 001

